

Adenylate kinase 1 antibody [18C7]

Cat. No. GTX84937

Host	Mouse
Clonality	Monoclonal
Isotype	IgG1
Applications	WB, ICC/IF, FCM
Reactivity	Human

Package
100 µl

Applications

Application Note

*Optimal dilutions/concentrations should be determined by the researcher.

Suggested dilution	Recommended dilution
WB	1:2000
ICC/IF	1:100
FCM	1:100

Not tested in other applications.

Calculated MW 22 kDa. ([Note](#))

Properties

Form	Liquid
Buffer	PBS, 1% BSA, 50% Glycerol
Preservative	0.02% Sodium azide
Storage	Store as concentrated solution. Centrifuge briefly prior to opening vial. For short-term storage (1-2 weeks), store at 4°C. For long-term storage, aliquot and store at -20°C or below. Avoid multiple freeze-thaw cycles.
Concentration	1 mg/ml (Please refer to the vial label for the specific concentration.)
Immunogen	Full length human recombinant protein of human AK1 (NP_000467) produced in HEK293T cell.
Purification	Purified by affinity chromatography From tissue culture supernatant
Conjugation	Unconjugated

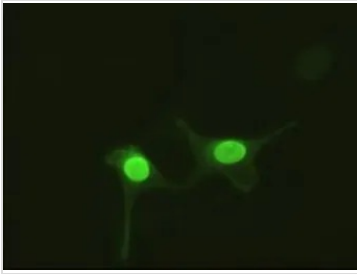
Note

For laboratory research use only. Not for any clinical, therapeutic, or diagnostic use in humans or animals. Not for animal or human consumption.

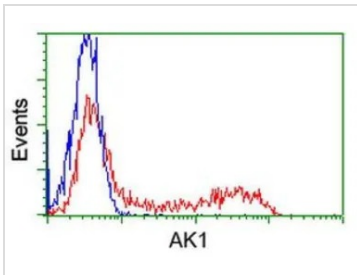
Purchasers shall not, and agree not to enable third parties to, analyze, copy, reverse engineer or otherwise attempt to determine the structure or sequence of the product.



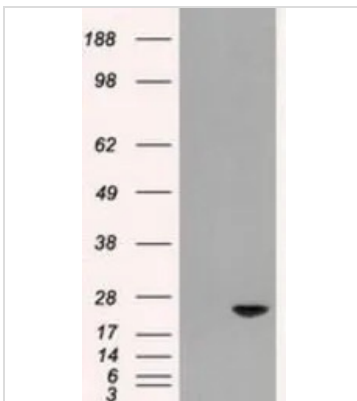
For full product information, images and publications, please visit our [website](#).

DATA IMAGES

GTx84937 ICC/IF Image

ICC/IF analysis of HeLa cells transiently transfected with Adenylate kinase 1 plasmid using GTx84937 Adenylate kinase 1 antibody [18C7].

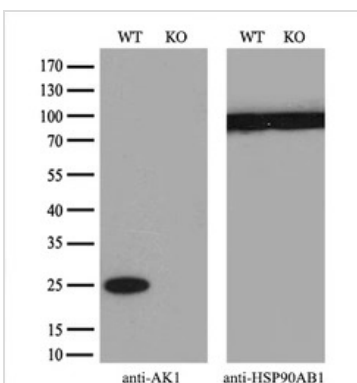

GTx84937 FCM Image

FACS analysis of HEK293T cells transfected with either Adenylate kinase 1 plasmid(Red) or empty vector control plasmid(Blue) using GTx84937 Adenylate kinase 1 antibody [18C7].


GTx84937 WB Image

WB analysis of HEK293T cells transfected with Adenylate kinase 1 plasmid (Right) or empty vector (Left) for 48 hrs using GTx84937 Adenylate kinase 1 antibody [18C7].

Loading : 5 ug per lane


GTx84937 WB Image

WB analysis of wild type and Adenylate kinase 1 knock out HeLa cell lysate(10µg per lane) using GTx84937 Adenylate kinase 1 antibody [18C7].

Dilution : 1:500



For full product information, images and publications, please visit our [website](https://www.genetex.com).