

Adenylate kinase 1 antibody [8A1]

Cat. No. GTX84938

Host	Mouse
Clonality	Monoclonal
Isotype	IgG1
Applications	WB, ICC/IF, IHC-P, FCM
Reactivity	Human, Monkey

References (1)

Package

100 µl

Applications

Application Note

*Optimal dilutions/concentrations should be determined by the researcher.

Suggested dilution	Recommended dilution
WB	1:1000-1:2000
ICC/IF	1:100
IHC-P	Assay dependent
FCM	1:100

Not tested in other applications.

Calculated MW 22 kDa. ([Note](#))

Properties

Form	Liquid
Buffer	PBS, 1% BSA, 50% Glycerol
Preservative	0.02% Sodium azide
Storage	Store as concentrated solution. Centrifuge briefly prior to opening vial. For short-term storage (1-2 weeks), store at 4°C. For long-term storage, aliquot and store at -20°C or below. Avoid multiple freeze-thaw cycles.
Concentration	0.62 mg/ml (Please refer to the vial label for the specific concentration.)
Immunogen	Full length human recombinant protein of human AK1 (NP_000467) produced in HEK293T cell.
Purification	Purified by affinity chromatography
Conjugation	Unconjugated

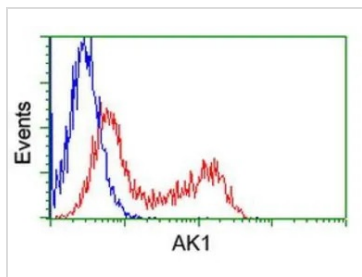
Note

For laboratory research use only. Not for any clinical, therapeutic, or diagnostic use in humans or animals. Not for animal or human consumption.

Purchasers shall not, and agree not to enable third parties to, analyze, copy, reverse engineer or otherwise attempt to determine the structure or sequence of the product.

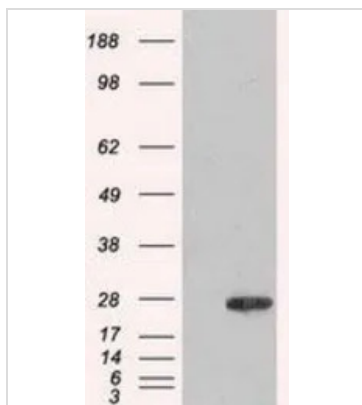
For full product information, images and publications, please visit our [website](#).

DATA IMAGES



GTX84938 FCM Image

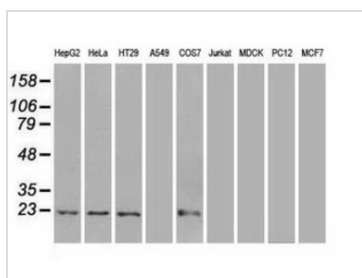
FACS analysis of HEK293T cells transfected with either Adenylate kinase 1 plasmid(Red) or empty vector control plasmid(Blue) using GTX84938 Adenylate kinase 1 antibody [8A1].



GTX84938 WB Image

WB analysis of HEK293T cells transfected with Adenylate kinase 1 plasmid (Right) or empty vector (Left) for 48 hrs using GTX84938 Adenylate kinase 1 antibody [8A1].

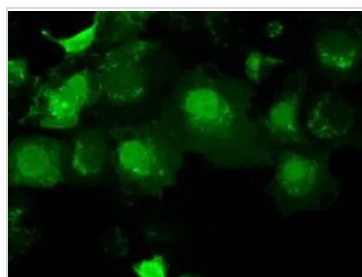
Loading : 5 ug per lane



GTX84938 WB Image

WB analysis of various cell lines using GTX84938 Adenylate kinase 1 antibody [8A1].

Loading : 35 ug per lane



GTX84938 ICC/IF Image

ICC/IF analysis of COS7 cells transiently transfected with Adenylate kinase 1 plasmid using GTX84938 Adenylate kinase 1 antibody [8A1].



For full product information, images and publications, please visit our [website](#).