

## Alpha fetoprotein / AFP antibody [1E8]

Cat. No. GTX84953

<b>Host</b>	Mouse
<b>Clonality</b>	Monoclonal
<b>Isotype</b>	IgG1
<b>Applications</b>	WB, IHC-P, FCM
<b>Reactivity</b>	Human

Package  
100 µl

## Applications

## Application Note

\*Optimal dilutions/concentrations should be determined by the researcher.

Suggested dilution	Recommended dilution
WB	1:200-1:500
IHC-P	1:150
FCM	1:100

Not tested in other applications.

**Calculated MW** 69 kDa. ( [Note](#) )

## Properties

<b>Form</b>	Liquid
<b>Buffer</b>	PBS, 1% BSA, 50% Glycerol
<b>Preservative</b>	0.02% Sodium azide
<b>Storage</b>	Store as concentrated solution. Centrifuge briefly prior to opening vial. For short-term storage (1-2 weeks), store at 4°C. For long-term storage, aliquot and store at -20°C or below. Avoid multiple freeze-thaw cycles.
<b>Concentration</b>	1 mg/ml (Please refer to the vial label for the specific concentration.)
<b>Immunogen</b>	Full length human recombinant protein of human AFP (NP_001125) produced in HEK293T cell.
<b>Purification</b>	Purified by affinity chromatography From tissue culture supernatant
<b>Conjugation</b>	Unconjugated

## Note

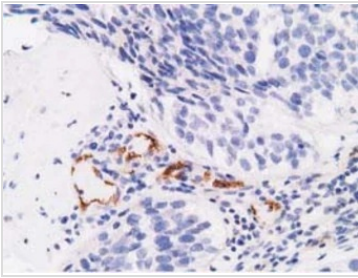
For laboratory research use only. Not for any clinical, therapeutic, or diagnostic use in humans or animals. Not for animal or human consumption.

Purchasers shall not, and agree not to enable third parties to, analyze, copy, reverse engineer or otherwise attempt to determine the structure or sequence of the product.



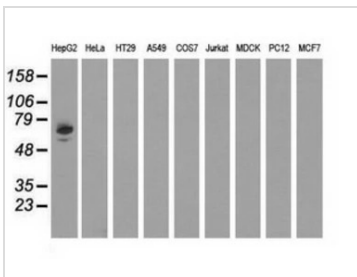
For full product information, images and publications, please visit our [website](#).

## DATA IMAGES



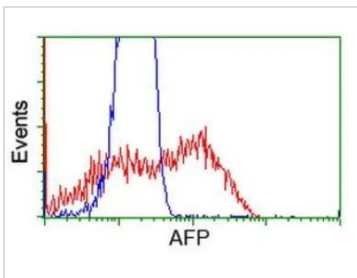
### GTX84953 IHC-P Image

IHC-P analysis of human bladder carcinoma tissue using GTX84953 Alpha fetoprotein / AFP antibody [1E8].  
Antigen retrieval : Heat-induced epitope retrieval by 10mM citrate buffer, pH6.0, 100°C for 10min.  
Dilution : 1:50



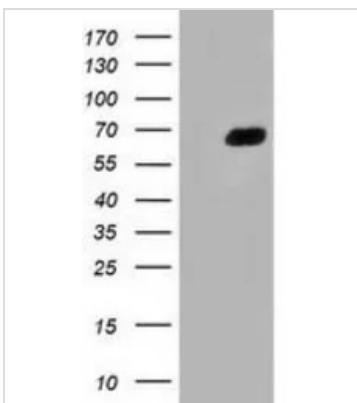
### GTX84953 WB Image

WB analysis of various cell lines using GTX84953 Alpha fetoprotein / AFP antibody [1E8].  
Loading : 35 ug per lane



### GTX84953 FCM Image

FACS analysis of HEK293T cells transfected with either Alpha fetoprotein / AFP plasmid (Red) or empty vector control plasmid (Blue) using GTX84953 Alpha fetoprotein / AFP antibody [1E8].



### GTX84953 WB Image

WB analysis of HEK293T cells transfected with Alpha fetoprotein / AFP plasmid (Right) or empty vector (Left) for 48 hrs using GTX84953 Alpha fetoprotein / AFP antibody [1E8].  
Loading : 5 ug per lane



For full product information, images and publications, please visit our [website](https://www.genetex.com).