

ATP citrate lyase antibody [3G8]

Cat. No. GTX84967

Host	Mouse
Clonality	Monoclonal
Isotype	IgG1
Applications	WB, ICC/IF, IHC-P
Reactivity	Human, Mouse, Monkey

Package
100 µl

Applications

Application Note

*Optimal dilutions/concentrations should be determined by the researcher.

Suggested dilution	Recommended dilution
WB	1:500
ICC/IF	1:100
IHC-P	1:50

Not tested in other applications.

Calculated MW 121 kDa. ([Note](#))

Properties

Form	Liquid
Buffer	PBS, 1% BSA, 50% Glycerol
Preservative	0.02% Sodium azide
Storage	Store as concentrated solution. Centrifuge briefly prior to opening vial. For short-term storage (1-2 weeks), store at 4°C. For long-term storage, aliquot and store at -20°C or below. Avoid multiple freeze-thaw cycles.
Concentration	0.58 mg/ml (Please refer to the vial label for the specific concentration.)
Immunogen	Full length human recombinant protein of human ACLY (NP_001087) produced in HEK293T cell.
Purification	Purified by affinity chromatography
Conjugation	Unconjugated

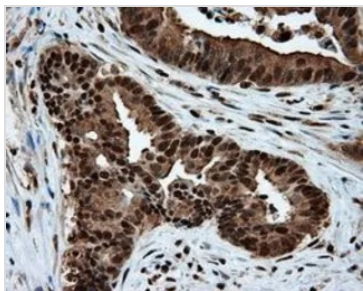
Note

For laboratory research use only. Not for any clinical, therapeutic, or diagnostic use in humans or animals. Not for animal or human consumption.

Purchasers shall not, and agree not to enable third parties to, analyze, copy, reverse engineer or otherwise attempt to determine the structure or sequence of the product.



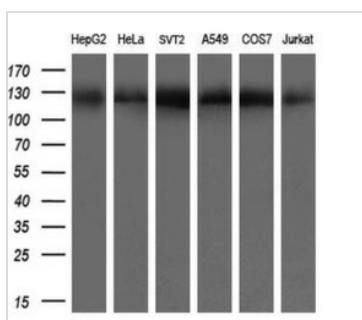
For full product information, images and publications, please visit our [website](#).

DATA IMAGES

GTX84967 IHC-P Image

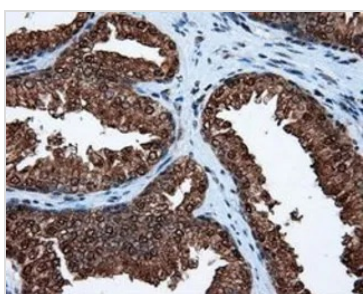
IHC-P analysis of colon adenocarcinoma tissue using GTX84967 ATP citrate lyase antibody [3G8].
Antigen retrieval : Heat-induced epitope retrieval by 10mM citrate buffer, pH6.0, 100°C for 10min.
Dilution : 1:50


GTX84967 IHC-P Image

IHC-P analysis of colon tissue using GTX84967 ATP citrate lyase antibody [3G8].
Antigen retrieval : Heat-induced epitope retrieval by 10mM citrate buffer, pH6.0, 100°C for 10min.
Dilution : 1:50


GTX84967 WB Image

WB analysis of various cell lines using GTX84967 ATP citrate lyase antibody [3G8].
Loading : 10 ug per lane
Dilution : 1:200


GTX84967 IHC-P Image

IHC-P analysis of prostate tissue using GTX84967 ATP citrate lyase antibody [3G8].
Antigen retrieval : Heat-induced epitope retrieval by 10mM citrate buffer, pH6.0, 100°C for 10min.
Dilution : 1:50



For full product information, images and publications, please visit our [website](https://www.genetex.com).