

Bim antibody [1C2C8]

Cat. No. GTX84981

Host	Mouse
Clonality	Monoclonal
Isotype	IgG1
Application	WB, ICC/IF, ELISA
Reactivity	Human, Mouse

Package
100 µg

APPLICATION

Application Note

*Optimal dilutions/concentrations should be determined by the researcher.

Suggested dilution	Recommended dilution
WB	1 µg/mL
ICC/IF	10 µg/mL
ELISA	Assay dependent

Not tested in other applications.

Calculated MW 22 kDa. ([Note](#))

PROPERTIES

Form	Liquid
Buffer	PBS
Preservative	0.02% Sodium azide
Storage	Store as concentrated solution. Centrifuge briefly prior to opening vial. For short-term storage (1-2 weeks), store at 4°C. For long-term storage, aliquot and store at -20°C or below. Avoid multiple freeze-thaw cycles.
Concentration	1 mg/ml (Please refer to the vial label for the specific concentration.)
Immunogen	Mouse monoclonal Bim antibody was raised against a recombinant protein corresponding to amino acids 2 to 198 of human Bim.
Purification	Purified by affinity chromatography
Conjugation	Unconjugated

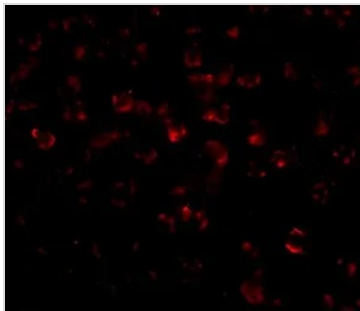
Note For laboratory research use only. Not for any clinical, therapeutic, or diagnostic use in humans or animals. Not for animal or human consumption.

Purchasers shall not, and agree not to enable third parties to, analyze, copy, reverse engineer or otherwise attempt to determine the structure or sequence of the product.



For full product information, images and publications, please visit our [website](#).

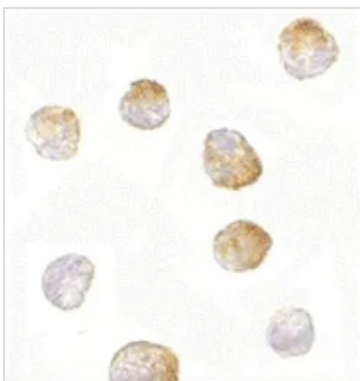
DATA IMAGES



GTX84981 ICC/IF Image

ICC/IF analysis of K562 cells using GTX84981 Bim antibody [1C2C8].

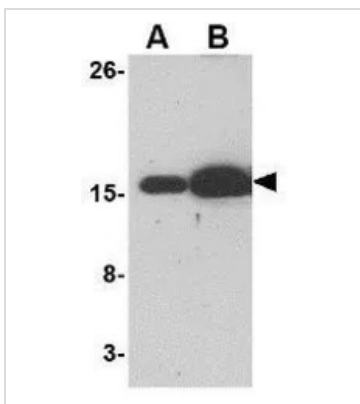
Working concentration : 20 µg/ml



GTX84981 ICC/IF Image

ICC/IF analysis of K562 cells using GTX84981 Bim antibody [1C2C8].

Working concentration : 10 µg/ml



GTX84981 WB Image

WB analysis of (A) 5 and (B) 25 ng Bim recombinant protein using GTX84981 Bim antibody [1C2C8].

Working concentration : 1 µg/ml



For full product information, images and publications, please visit our [website](https://www.genetex.com).