

PUMA antibody [10C5G1]

Cat. No. GTX84990

Host	Mouse
Clonality	Monoclonal
Isotype	IgG1
Application	WB, ELISA
Reactivity	Human, Rat

Package
100 µg

APPLICATION

Application Note

*Optimal dilutions/concentrations should be determined by the researcher.

Suggested dilution	Recommended dilution
WB	2.5 to 5 µg/mL
ELISA	Assay dependent

Not tested in other applications.

PROPERTIES

Form	Liquid
Buffer	PBS
Preservative	0.02% Sodium azide
Storage	Store as concentrated solution. Centrifuge briefly prior to opening vial. For short-term storage (1-2 weeks), store at 4°C. For long-term storage, aliquot and store at -20°C or below. Avoid multiple freeze-thaw cycles.
Concentration	1 mg/ml (Please refer to the vial label for the specific concentration.)
Immunogen	Recombinant protein corresponding to amino acids 76 - 170 of human PUMA-alpha.
Purification	Purified by affinity chromatography
Conjugation	Unconjugated

Note

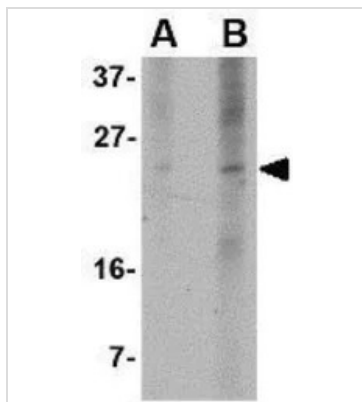
For laboratory research use only. Not for any clinical, therapeutic, or diagnostic use in humans or animals. Not for animal or human consumption.

Purchasers shall not, and agree not to enable third parties to, analyze, copy, reverse engineer or otherwise attempt to determine the structure or sequence of the product.



For full product information, images and publications, please visit our [website](#).

DATA IMAGES



GTx84990 WB Image

WB analysis of K562 cell lysate using GTx84990 PUMA antibody [10C5G1].

Working concentration : (A) 2.5 and (B) 5 μ g/ml



For full product information, images and publications, please visit our [website](#).