

## DC-SIGN antibody [8B6]

**Cat. No. GTX84993**

<b>Host</b>	Mouse
<b>Clonality</b>	Monoclonal
<b>Isotype</b>	IgG1
<b>Applications</b>	WB, IHC-P, ELISA
<b>Reactivity</b>	Human

**Package**  
100 µg

## Applications

**Application Note**

\*Optimal dilutions/concentrations should be determined by the researcher.

Suggested dilution	Recommended dilution
WB	1 - 2 mg/mL
IHC-P	5 - 10 mg/mL
ELISA	Assay dependent

Not tested in other applications.

**Calculated MW** 46 kDa. ([Note](#))

## Properties

<b>Form</b>	Liquid
<b>Buffer</b>	PBS
<b>Preservative</b>	0.02% Sodium azide
<b>Storage</b>	Store as concentrated solution. Centrifuge briefly prior to opening vial. For short-term storage (1-2 weeks), store at 4°C. For long-term storage, aliquot and store at -20°C or below. Avoid multiple freeze-thaw cycles.
<b>Concentration</b>	1 mg/ml (Please refer to the vial label for the specific concentration.)
<b>Immunogen</b>	A recombinant His-tagged protein fragment corresponding to the extracellular region of human DC-SIGN.
<b>Purification</b>	Purified by affinity chromatography
<b>Conjugation</b>	Unconjugated

**Note**

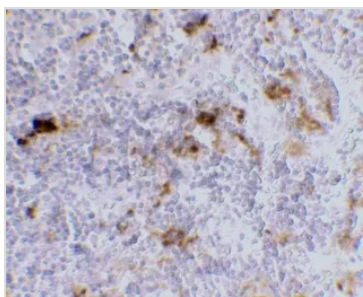
For laboratory research use only. Not for any clinical, therapeutic, or diagnostic use in humans or animals. Not for animal or human consumption.

Purchasers shall not, and agree not to enable third parties to, analyze, copy, reverse engineer or otherwise attempt to determine the structure or sequence of the product.



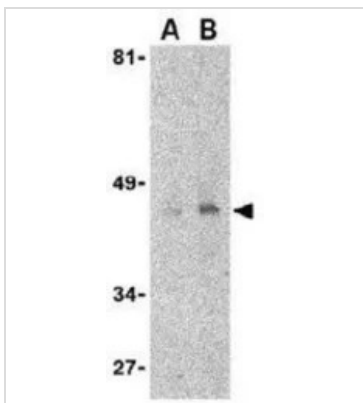
For full product information, images and publications, please visit our [website](#).

DATA IMAGES



**GTX84993 IHC-P Image**

IHC-P analysis of lymph node tissue using GTX84993 DC-SIGN antibody [8B6].  
Working concentration : 10 µg/ml



**GTX84993 WB Image**

WB analysis of human uterus tissue lysate using GTX84993 DC-SIGN antibody [8B6].  
Working concentration : (A) 1 and (B) 2 µg/ml



For full product information, images and publications, please visit our [website](#).