

## Slc22A17 antibody

Cat. No. GTX85032

Host	Rabbit
Clonality	Polyclonal
Isotype	IgG
Applications	WB, IHC-P, ELISA
Reactivity	Human, Mouse, Rat

References ( 1 )

Package

100 µg

## Applications

## Application Note

\*Optimal dilutions/concentrations should be determined by the researcher.

Suggested dilution	Recommended dilution
WB	0.5 µg/mL
IHC-P	2.5 µg/mL
ELISA	Assay dependent

Not tested in other applications.

Calculated MW 58 kDa. ( [Note](#) )

## Properties

Form	Liquid
Buffer	PBS
Preservative	0.02% Sodium azide
Storage	Store as concentrated solution. Centrifuge briefly prior to opening vial. For short-term storage (1-2 weeks), store at 4°C. For long-term storage, aliquot and store at -20°C or below. Avoid multiple freeze-thaw cycles.
Concentration	1 mg/ml (Please refer to the vial label for the specific concentration.)
Immunogen	Slc22A17 antibody was raised against a 14 amino acid synthetic peptide near the carboxy terminus of the human Slc22A17. The immunogen is located within the last 50 amino acids of Slc22A17.
Purification	Purified by antigen-affinity chromatography
Conjugation	Unconjugated

## Note

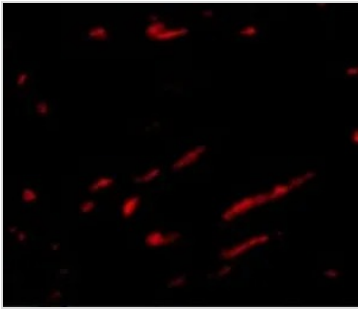
For laboratory research use only. Not for any clinical, therapeutic, or diagnostic use in humans or animals. Not for animal or human consumption.

Purchasers shall not, and agree not to enable third parties to, analyze, copy, reverse engineer or otherwise attempt to determine the structure or sequence of the product.



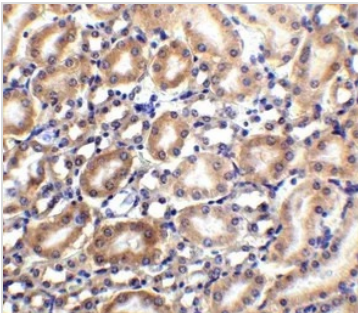
For full product information, images and publications, please visit our [website](#).

## DATA IMAGES



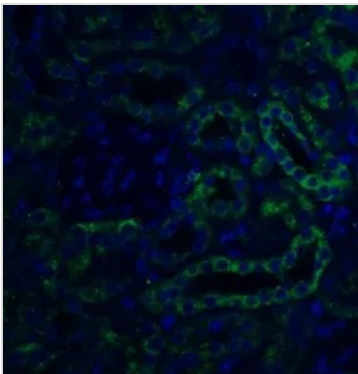
### GTX85032 IHC-P Image

IHC-P analysis of rat kidney tissue using GTX85032 Slc22A17 antibody.  
Working concentration : 20 µg/ml



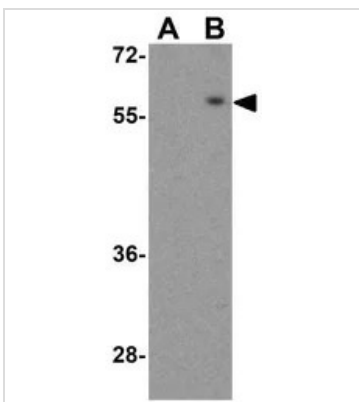
### GTX85032 IHC-P Image

IHC-P analysis of mouse kidney tissue using GTX85032 Slc22A17 antibody.  
Working concentration : 2.5 µg/ml



### GTX85032 IHC-P Image

IHC-P analysis of mouse kidney tissue using GTX85032 Slc22A17 antibody.  
Working concentration : 20 µg/ml



### GTX85032 WB Image

WB analysis of SK-N-SH lysate in (A) the presence and (B) the absence of blocking peptide using GTX85032 Slc22A17 antibody.  
Working concentration : 0.5 µg/ml



For full product information, images and publications, please visit our [website](https://www.genetex.com).