

## GPAM antibody

Cat. No. GTX85034

Host	Rabbit
Clonality	Polyclonal
Isotype	IgG
Applications	WB, IHC-P, ELISA
Reactivity	Human, Mouse, Rat

Package  
100 µg

## Applications

## Application Note

\*Optimal dilutions/concentrations should be determined by the researcher.

Suggested dilution	Recommended dilution
WB	1 - 2 µg/mL
IHC-P	2.5 µg/mL
ELISA	Assay dependent

Not tested in other applications.

Calculated MW	94 kDa. ( <a href="#">Note</a> )
Product Note	At least four isoforms are known to exist; this antibody will detect only the two largest isoforms.

## Properties

Form	Liquid
Buffer	PBS
Preservative	0.02% Sodium azide
Storage	Store as concentrated solution. Centrifuge briefly prior to opening vial. For short-term storage (1-2 weeks), store at 4°C. For long-term storage, aliquot and store at -20°C or below. Avoid multiple freeze-thaw cycles.
Concentration	1 mg/ml (Please refer to the vial label for the specific concentration.)
Immunogen	GPAM antibody was raised against a 15 amino acid synthetic peptide near the carboxy terminus of the human GPAM .The immunogen is located within amino acids 730 - 780 of GPAM.
Purification	Purified by antigen-affinity chromatography
Conjugation	Unconjugated

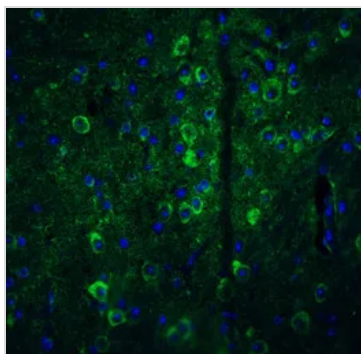
For full product information, images and publications, please visit our [website](#).

For laboratory research use only. Not for any clinical, therapeutic, or diagnostic use in humans or animals. Not for animal or human consumption.

## Note

Purchasers shall not, and agree not to enable third parties to, analyze, copy, reverse engineer or otherwise attempt to determine the structure or sequence of the product.

## DATA IMAGES



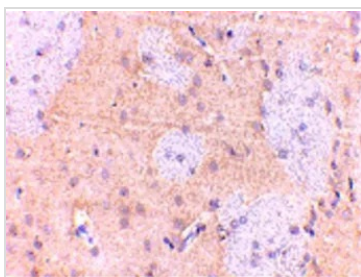
### GTx85034 IHC-P Image

IHC-P analysis of mouse brain tissue using GTx85034 GPAM antibody.

Green : Primary antibody

Blue : DAPI

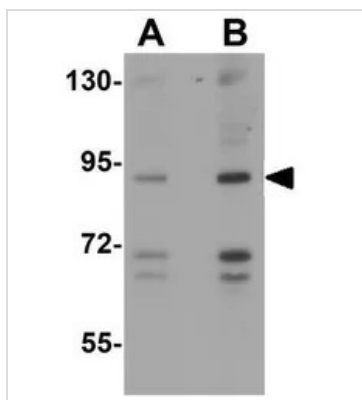
Dilution : 20 µg/ml



### GTx85034 IHC-P Image

IHC-P analysis of rat brain tissue using GTx85034 GPAM antibody.

Working concentration : 2.5 µg/ml



### GTx85034 WB Image

WB analysis of rat brain tissue lysate using GTx85034 GPAM antibody.

Working concentration : (A) 1 and (B) 2 µg/ml



For full product information, images and publications, please visit our [website](#).