

## Orai1 antibody

Cat. No. GTX85048

Host	Rabbit
Clonality	Polyclonal
Isotype	IgG
Applications	WB, IHC-P, ELISA
Reactivity	Human, Mouse

Package  
100 µg

## Applications

## Application Note

\*Optimal dilutions/concentrations should be determined by the researcher.

Suggested dilution	Recommended dilution
WB	0.5 - 2 µg/mL
IHC-P	2.5 µg/mL
ELISA	Assay dependent

Not tested in other applications.

Calculated MW	33 kDa. ( <a href="#">Note</a> )
Product Note	This antibody is predicted to have no cross-reactivity to ORAI2 or ORAI3.

## Properties

Form	Liquid
Buffer	PBS
Preservative	0.02% Sodium azide
Storage	Store as concentrated solution. Centrifuge briefly prior to opening vial. For short-term storage (1-2 weeks), store at 4°C. For long-term storage, aliquot and store at -20°C or below. Avoid multiple freeze-thaw cycles.
Concentration	1 mg/ml (Please refer to the vial label for the specific concentration.)
Immunogen	ORAI1 antibody was raised against a 16 amino acid synthetic peptide from near the carboxy terminus of human ORAI1. The immunogen is located within the last 50 amino acids of ORAI1.
Purification	Purified by antigen-affinity chromatography
Conjugation	Unconjugated



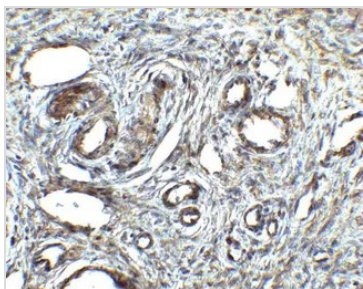
For full product information, images and publications, please visit our [website](#).

Date 2026 / 01 / 10 Page 1 of 2

For laboratory research use only. Not for any clinical, therapeutic, or diagnostic use in humans or animals. Not for animal or human consumption.

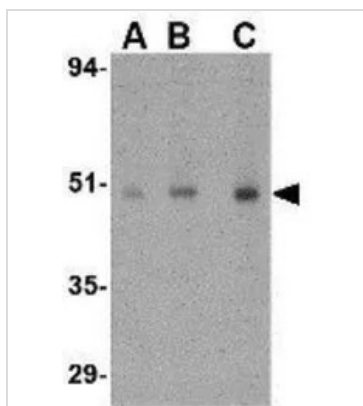
**Note**

Purchasers shall not, and agree not to enable third parties to, analyze, copy, reverse engineer or otherwise attempt to determine the structure or sequence of the product.

**DATA IMAGES**

**GTx85048 IHC-P Image**

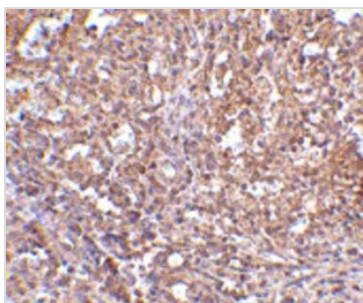
IHC-P analysis of human ovary tissue using GTx85048 Orai1 antibody.

Working concentration : 2.5 µg/ml


**GTx85048 WB Image**

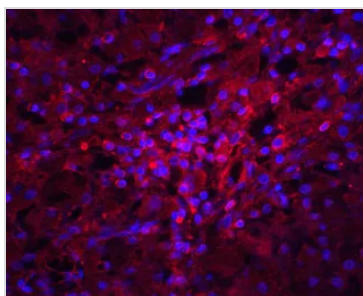
WB analysis of human ovary tissue lysate using GTx85048 Orai1 antibody.

Working concentration : (A) 0.5, (B) 1, and (C) 2 µg/ml


**GTx85048 IHC-P Image**

IHC-P analysis of human spleen tissue using GTx85048 Orai1 antibody.

Working concentration : 2.5 µg/ml


**GTx85048 IHC-P Image**

IHC-P analysis of human ovary tissue using GTx85048 Orai1 antibody.

Red : Primary antibody

Blue : DAPI

Dilution : 20 µg/ml



For full product information, images and publications, please visit our [website](https://www.genetex.com).