

Orai1 antibody

Cat. No. GTX85048

Host	Rabbit
Clonality	Polyclonal
Isotype	IgG
Applications	WB, IHC-P, ELISA
Reactivity	Human, Mouse

Package
100 µg

Applications

Application Note

*Optimal dilutions/concentrations should be determined by the researcher.

Suggested dilution	Recommended dilution
WB	0.5 - 2 µg/mL
IHC-P	2.5 µg/mL
ELISA	Assay dependent

Not tested in other applications.

Calculated MW 33 kDa. ([Note](#))

Product Note This antibody is predicted to have no cross-reactivity to ORAI2 or ORAI3.

Properties

Form	Liquid
Buffer	PBS
Preservative	0.02% Sodium azide
Storage	Store as concentrated solution. Centrifuge briefly prior to opening vial. For short-term storage (1-2 weeks), store at 4°C. For long-term storage, aliquot and store at -20°C or below. Avoid multiple freeze-thaw cycles.
Concentration	1 mg/ml (Please refer to the vial label for the specific concentration.)
Immunogen	ORAI1 antibody was raised against a 16 amino acid synthetic peptide from near the carboxy terminus of human ORAI1. The immunogen is located within the last 50 amino acids of ORAI1.
Purification	Purified by antigen-affinity chromatography
Conjugation	Unconjugated



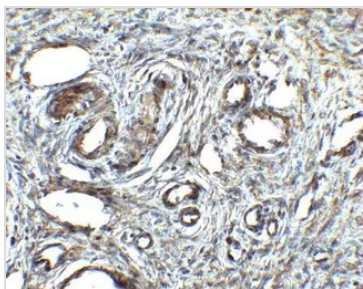
For full product information, images and publications, please visit our [website](#).

For laboratory research use only. Not for any clinical, therapeutic, or diagnostic use in humans or animals. Not for animal or human consumption.

Note

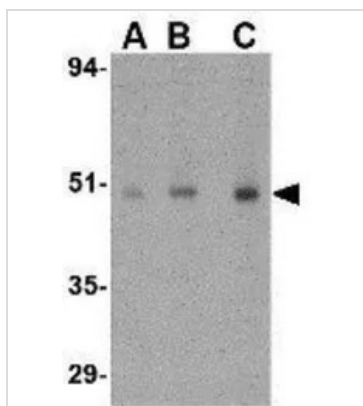
Purchasers shall not, and agree not to enable third parties to, analyze, copy, reverse engineer or otherwise attempt to determine the structure or sequence of the product.

DATA IMAGES

**GTX85048 IHC-P Image**

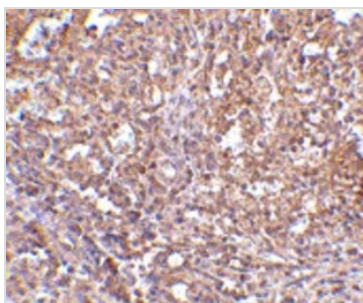
IHC-P analysis of human ovary tissue using GTX85048 Orai1 antibody.

Working concentration : 2.5 µg/ml

**GTX85048 WB Image**

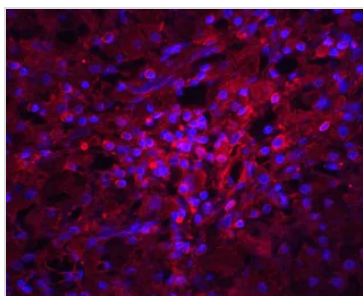
WB analysis of human ovary tissue lysate using GTX85048 Orai1 antibody.

Working concentration : (A) 0.5, (B) 1, and (C) 2 µg/ml

**GTX85048 IHC-P Image**

IHC-P analysis of human spleen tissue using GTX85048 Orai1 antibody.

Working concentration : 2.5 µg/ml

**GTX85048 IHC-P Image**

IHC-P analysis of human ovary tissue using GTX85048 Orai1 antibody.

Red : Primary antibody

Blue : DAPI

Dilution : 20 µg/ml



For full product information, images and publications, please visit our [website](#).