

## Carabin antibody

Cat. No. GTX85050

Host	Rabbit
Clonality	Polyclonal
Isotype	IgG
Applications	WB, IHC-P, ELISA
Reactivity	Human, Mouse

Package  
100 µg

## Applications

## Application Note

\*Optimal dilutions/concentrations should be determined by the researcher.

Suggested dilution	Recommended dilution
WB	1 - 2 µg/mL
IHC-P	2.5 µg/mL
ELISA	Assay dependent

Not tested in other applications.

Calculated MW 50 kDa. ( [Note](#) )

## Properties

Form	Liquid
Buffer	PBS
Preservative	0.02% Sodium azide
Storage	Store as concentrated solution. Centrifuge briefly prior to opening vial. For short-term storage (1-2 weeks), store at 4°C. For long-term storage, aliquot and store at -20°C or below. Avoid multiple freeze-thaw cycles.
Concentration	1 mg/ml (Please refer to the vial label for the specific concentration.)
Immunogen	Carabin antibody was raised against a 16 amino acid synthetic peptide from near the carboxy terminus of human Carabin. The immunogen is located within the last 50 amino acids of Carabin.
Purification	Purified by antigen-affinity chromatography
Conjugation	Unconjugated

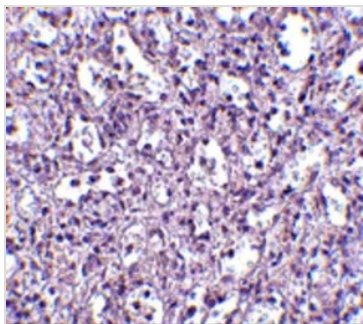
## Note

For laboratory research use only. Not for any clinical, therapeutic, or diagnostic use in humans or animals. Not for animal or human consumption.

Purchasers shall not, and agree not to enable third parties to, analyze, copy, reverse engineer or otherwise attempt to determine the structure or sequence of the product.

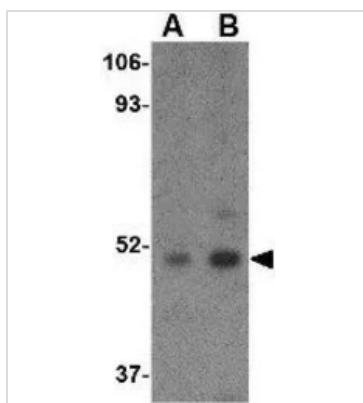
For full product information, images and publications, please visit our [website](#).

## DATA IMAGES



### GTX85050 IHC-P Image

IHC-P analysis of human spleen tissue using GTX85050 Carabin antibody.  
Working concentration : 2.5 µg/ml



### GTX85050 WB Image

WB analysis of Daudi cell lysate using GTX85050 Carabin antibody.  
Working concentration : (A) 1 and (B) 2 µg/ml



For full product information, images and publications, please visit our [website](#).