

Orai1 antibody

Cat. No. GTX85057

Host	Rabbit
Clonality	Polyclonal
Isotype	IgG
Applications	WB, IHC-P, ELISA
Reactivity	Human, Mouse

References (1)

Package

100 µg

Applications

Application Note

*Optimal dilutions/concentrations should be determined by the researcher.

Suggested dilution	Recommended dilution
WB	1 µg/mL
IHC-P	10 µg/mL
ELISA	Assay dependent

Not tested in other applications.

Calculated MW	33 kDa. (Note)
Product Note	This antibody is predicted to have no cross-reactivity to ORAI2 or ORAI3.

Properties

Form	Liquid
Buffer	PBS
Preservative	0.02% Sodium azide
Storage	Store as concentrated solution. Centrifuge briefly prior to opening vial. For short-term storage (1-2 weeks), store at 4°C. For long-term storage, aliquot and store at -20°C or below. Avoid multiple freeze-thaw cycles.
Concentration	1 mg/ml (Please refer to the vial label for the specific concentration.)
Immunogen	ORAI1 antibody was raised against an 18 amino acid synthetic peptide from near the amino terminus of human ORAI1. The immunogen is located within the first 50 amino acids of ORAI1.
Purification	Purified by antigen-affinity chromatography
Conjugation	Unconjugated



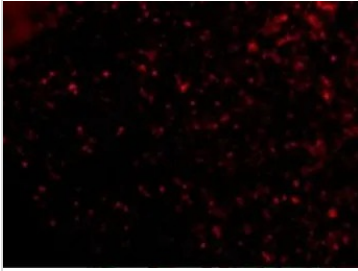
For full product information, images and publications, please visit our [website](#).

For laboratory research use only. Not for any clinical, therapeutic, or diagnostic use in humans or animals. Not for animal or human consumption.

Note

Purchasers shall not, and agree not to enable third parties to, analyze, copy, reverse engineer or otherwise attempt to determine the structure or sequence of the product.

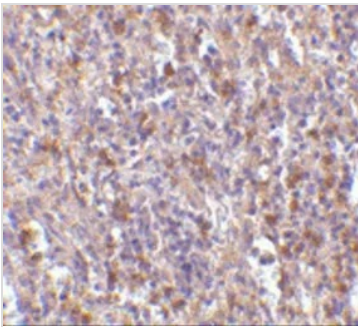
DATA IMAGES



GTX85057 IHC-P Image

IHC-P analysis of human spleen tissue using GTX85057 Orai1 antibody.

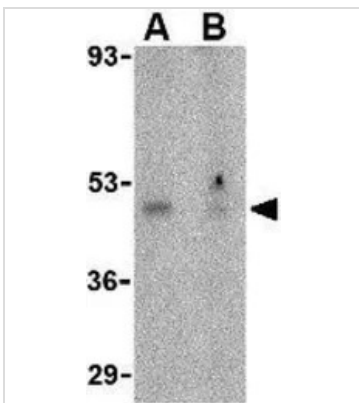
Working concentration : 20 µg/ml



GTX85057 IHC-P Image

IHC-P analysis of human spleen tissue using GTX85057 Orai1 antibody.

Working concentration : 10 µg/ml



GTX85057 WB Image

WB analysis of human ovary tissue lysate in the (A) absence or (B) presence of blocking peptide using GTX85057 Orai1 antibody.

Working concentration : 1 µg/ml



For full product information, images and publications, please visit our [website](#).