

TIM-1 antibody

Cat. No. GTX85067

Host	Rabbit
Clonality	Polyclonal
Isotype	IgG
Applications	WB, ELISA
Reactivity	Human, Mouse, Rat

References (8)

Package

100 µg

Applications

Application Note

*Optimal dilutions/concentrations should be determined by the researcher.

Suggested dilution	Recommended dilution
WB	1 - 2 µg/mL
ELISA	Assay dependent

Not tested in other applications.

Calculated MW 39 kDa. ([Note](#))

Properties

Form	Liquid
Buffer	PBS
Preservative	0.02% Sodium azide
Storage	Store as concentrated solution. Centrifuge briefly prior to opening vial. For short-term storage (1-2 weeks), store at 4°C. For long-term storage, aliquot and store at -20°C or below. Avoid multiple freeze-thaw cycles.
Concentration	1 mg/ml (Please refer to the vial label for the specific concentration.)
Immunogen	TIM-1 antibody was raised against a 16 amino acid synthetic peptide from near the center of human TIM-1. The immunogen is located within amino acids 230 - 280 of TIM-1.
Purification	Purified by antigen-affinity chromatography
Conjugation	Unconjugated

Note

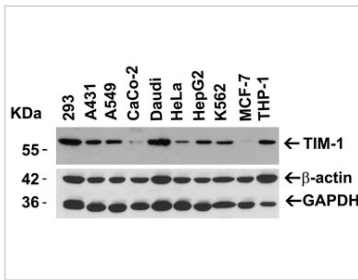
For laboratory research use only. Not for any clinical, therapeutic, or diagnostic use in humans or animals. Not for animal or human consumption.

Purchasers shall not, and agree not to enable third parties to, analyze, copy, reverse engineer or otherwise attempt to determine the structure or sequence of the product.



For full product information, images and publications, please visit our [website](#).

DATA IMAGES

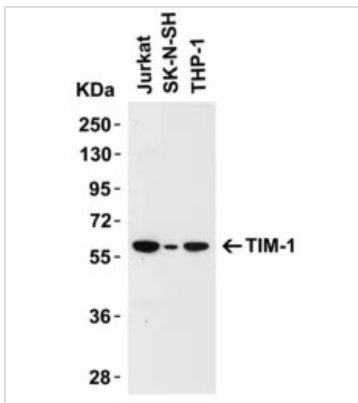


GTX85067 WB Image

WB analysis of various sample lysates using GTX85067 TIM-1 antibody.

Loading : 15μg of lysates per lane

Dilution : 8 μg/ml

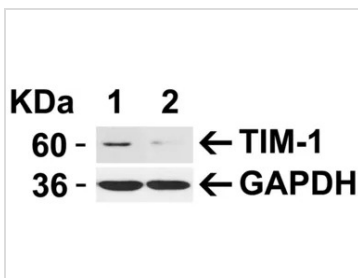


GTX85067 WB Image

WB analysis of various sample lysates using GTX85067 TIM-1 antibody.

Loading : 15μg of lysates per lane

Dilution : 1 μg/ml

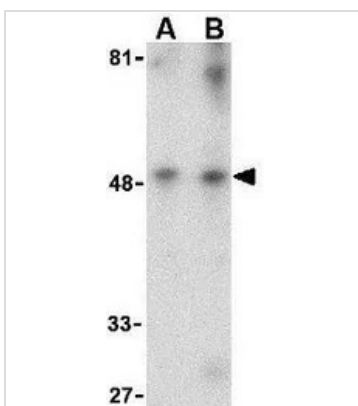


GTX85067 WB Image

WB analysis of HeLa cells were transfected with control siRNAs (lane 1) or TIM-1 siRNAs (lane 2) using GTX85067 TIM-1 antibody.

Loading : 15μg of lysates per lane

Dilution : 1 μg/ml



GTX85067 WB Image

WB analysis of human uterus tissue lysate using GTX85067 TIM-1 antibody.

Working concentration : (A) 1 and (B) 2 μg/ml



For full product information, images and publications, please visit our [website](https://www.genetex.com).