

GITRL antibody

Cat. No. GTX85076

Host	Rabbit
Clonality	Polyclonal
Isotype	IgG
Applications	WB, ELISA, IHC-P (cell pellet)
Reactivity	Human, Mouse

Package
100 µg

Applications

Application Note

*Optimal dilutions/concentrations should be determined by the researcher.

Suggested dilution	Recommended dilution
WB	1-2 µg/mL
ELISA	Assay dependent
IHC-P (cell pellet)	Assay dependent

Not tested in other applications.

Calculated MW 23 kDa. ([Note](#))

Properties

Form	Liquid
Buffer	PBS
Preservative	0.02% Sodium azide
Storage	Store as concentrated solution. Centrifuge briefly prior to opening vial. For short-term storage (1-2 weeks), store at 4°C. For long-term storage, aliquot and store at -20°C or below. Avoid multiple freeze-thaw cycles.
Concentration	1 mg/ml (Please refer to the vial label for the specific concentration.)
Immunogen	GITRL antibody was raised against purified recombinant human GITR ligand.
Purification	Protein A purified
Conjugation	Unconjugated

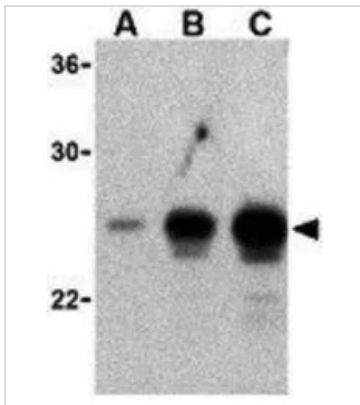
Note

For laboratory research use only. Not for any clinical, therapeutic, or diagnostic use in humans or animals. Not for animal or human consumption.

Purchasers shall not, and agree not to enable third parties to, analyze, copy, reverse engineer or otherwise attempt to determine the structure or sequence of the product.

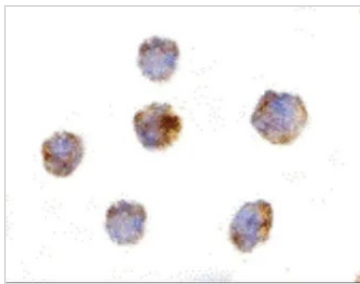


For full product information, images and publications, please visit our [website](#).

DATA IMAGES

GTX85076 WB Image

WB analysis of (A) 5 ng, (B) 25 ng, and (C) 50 ng purified recombinant GITRL protein using GTX85076 GITRL antibody.

Working concentration : 1 µg/ml


GTX85076 IHC-P (cell pellet) Image

IHC-P (cell pellet) analysis of THP-1 cells using GTX85076 GITRL antibody.

Working concentration : 10 µg/ml



For full product information, images and publications, please visit our [website](#).