

CTRP2 antibody

Cat. No. GTX85077

Host	Rabbit
Clonality	Polyclonal
Isotype	IgG
Applications	WB, ELISA
Reactivity	Human, Mouse

Package
100 µg

Applications

Application Note

*Optimal dilutions/concentrations should be determined by the researcher.

Suggested dilution	Recommended dilution
WB	1 µg/mL
ELISA	Assay dependent

Not tested in other applications.

Calculated MW 30 kDa. ([Note](#))

Product Note These proteins are often highly modified post-translationally and migrate in SDS-PAGE at positions other than their predicted size.

Properties

Form	Liquid
Buffer	PBS
Preservative	0.02% Sodium azide
Storage	Store as concentrated solution. Centrifuge briefly prior to opening vial. For short-term storage (1-2 weeks), store at 4°C. For long-term storage, aliquot and store at -20°C or below. Avoid multiple freeze-thaw cycles.
Concentration	1 mg/ml (Please refer to the vial label for the specific concentration.)
Immunogen	CTRP2 antibody was raised against a 16 amino acid synthetic peptide from near the amino-terminus of human CTRP2. The immunogen is located within amino acids 50 - 100 of CTRP2.
Purification	Purified by antigen-affinity chromatography
Conjugation	Unconjugated



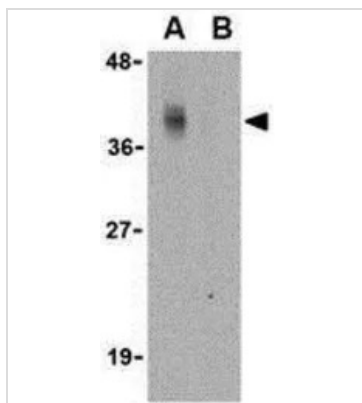
For full product information, images and publications, please visit our [website](#).

For laboratory research use only. Not for any clinical, therapeutic, or diagnostic use in humans or animals. Not for animal or human consumption.

Note

Purchasers shall not, and agree not to enable third parties to, analyze, copy, reverse engineer or otherwise attempt to determine the structure or sequence of the product.

DATA IMAGES

**GTX85077 WB Image**

WB analysis of Caco-2 cell lysate in the (A) absence or (B) presence of blocking peptide. using GTX85077 CTRP2 antibody.

Working concentration : 1 μ g/ml



For full product information, images and publications, please visit our [website](#).