

CTRP1 antibody

Cat. No. GTX85080

| | |
|---------------------|--------------|
| Host | Rabbit |
| Clonality | Polyclonal |
| Isotype | IgG |
| Applications | WB, ELISA |
| Reactivity | Human, Mouse |

Package
100 µg

Applications

Application Note

*Optimal dilutions/concentrations should be determined by the researcher.

| Suggested dilution | Recommended dilution |
|--------------------|----------------------|
| WB | 1 - 2 µg/mL |
| ELISA | Assay dependent |

Not tested in other applications.

Calculated MW 32 kDa. ([Note](#))

Product Note

These proteins are often highly modified post-translationally and migrate in SDS-PAGE at positions other than their predicted size.

Properties

| | |
|----------------------|--|
| Form | Liquid |
| Buffer | PBS |
| Preservative | 0.02% Sodium azide |
| Storage | Store as concentrated solution. Centrifuge briefly prior to opening vial. For short-term storage (1-2 weeks), store at 4°C. For long-term storage, aliquot and store at -20°C or below. Avoid multiple freeze-thaw cycles. |
| Concentration | 1 mg/ml (Please refer to the vial label for the specific concentration.) |
| Immunogen | CTRP1 (IN) antibody was raised against a 16 amino acid synthetic peptide from near the center of human CTRP1. The immunogen is located within amino acids 80 - 130 of CTRP1. |
| Purification | Purified by antigen-affinity chromatography |
| Conjugation | Unconjugated |



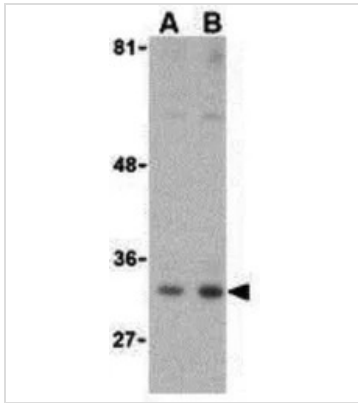
For full product information, images and publications, please visit our [website](#).

For laboratory research use only. Not for any clinical, therapeutic, or diagnostic use in humans or animals. Not for animal or human consumption.

Note

Purchasers shall not, and agree not to enable third parties to, analyze, copy, reverse engineer or otherwise attempt to determine the structure or sequence of the product.

DATA IMAGES

**GTX85080 WB Image**

WB analysis of MDA-MD-361 cell lysate using GTX85080 CTRP1 antibody.

Working concentration : (A) 1 and (B) 2 μ g/ml



For full product information, images and publications, please visit our [website](#).