

## CTRP1 antibody

**Cat. No. GTX85080**

<b>Host</b>	Rabbit
<b>Clonality</b>	Polyclonal
<b>Isotype</b>	IgG
<b>Applications</b>	WB, ELISA
<b>Reactivity</b>	Human, Mouse

**Package**  
100 µg

## Applications

**Application Note**

\*Optimal dilutions/concentrations should be determined by the researcher.

Suggested dilution	Recommended dilution
WB	1 - 2 µg/mL
ELISA	Assay dependent

Not tested in other applications.

**Calculated MW** 32 kDa. ([Note](#))

**Product Note** These proteins are often highly modified post-translationally and migrate in SDS-PAGE at positions other than their predicted size.

## Properties

<b>Form</b>	Liquid
<b>Buffer</b>	PBS
<b>Preservative</b>	0.02% Sodium azide
<b>Storage</b>	Store as concentrated solution. Centrifuge briefly prior to opening vial. For short-term storage (1-2 weeks), store at 4°C. For long-term storage, aliquot and store at -20°C or below. Avoid multiple freeze-thaw cycles.
<b>Concentration</b>	1 mg/ml (Please refer to the vial label for the specific concentration.)
<b>Immunogen</b>	CTRP1 (IN) antibody was raised against a 16 amino acid synthetic peptide from near the center of human CTRP1. The immunogen is located within amino acids 80 - 130 of CTRP1.
<b>Purification</b>	Purified by antigen-affinity chromatography
<b>Conjugation</b>	Unconjugated



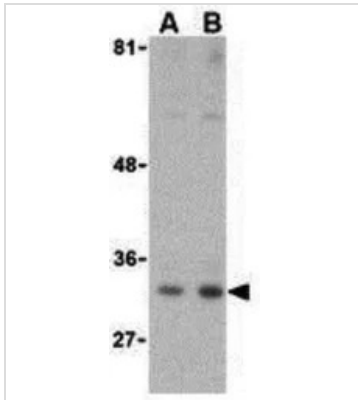
For full product information, images and publications, please visit our [website](#).

For laboratory research use only. Not for any clinical, therapeutic, or diagnostic use in humans or animals. Not for animal or human consumption.

**Note**

Purchasers shall not, and agree not to enable third parties to, analyze, copy, reverse engineer or otherwise attempt to determine the structure or sequence of the product.

## DATA IMAGES

**GTX85080 WB Image**

WB analysis of MDA-MD-361 cell lysate using GTX85080 CTRP1 antibody.

Working concentration : (A) 1 and (B) 2  $\mu\text{g/ml}$



For full product information, images and publications, please visit our [website](#).