

# UEV1A antibody

**Cat. No. GTX85082**

<b>Host</b>	Rabbit
<b>Clonality</b>	Polyclonal
<b>Isotype</b>	IgG
<b>Applications</b>	WB, ELISA
<b>Reactivity</b>	Human, Mouse, Rat

**Package**  
100 µg

## Applications

### Application Note

\*Optimal dilutions/concentrations should be determined by the researcher.

Suggested dilution	Recommended dilution
WB	1 - 4 µg/mL
ELISA	Assay dependent

Not tested in other applications.

**Calculated MW** 16 kDa. ( [Note](#) )

**Product Note** Anti-UEV1A may also recognize other isoforms of UEV1A.

## Properties

<b>Form</b>	Liquid
<b>Buffer</b>	PBS
<b>Preservative</b>	0.02% Sodium azide
<b>Storage</b>	Store as concentrated solution. Centrifuge briefly prior to opening vial. For short-term storage (1-2 weeks), store at 4°C. For long-term storage, aliquot and store at -20°C or below. Avoid multiple freeze-thaw cycles.
<b>Concentration</b>	1 mg/ml (Please refer to the vial label for the specific concentration.)
<b>Immunogen</b>	UEV1A antibody was raised against a peptide corresponding to 15 amino acids near the C-terminus of human UEV1A. The immunogen is located within the last 50 amino acids of UEV1A.
<b>Purification</b>	Purified by ion exchange chromatography
<b>Conjugation</b>	Unconjugated

### Note

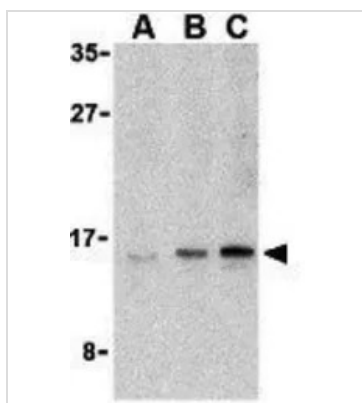
For laboratory research use only. Not for any clinical, therapeutic, or diagnostic use in humans or animals. Not for animal or human consumption.

Purchasers shall not, and agree not to enable third parties to, analyze, copy, reverse engineer or otherwise attempt to determine the structure or sequence of the product.



For full product information, images and publications, please visit our [website](#).

## DATA IMAGES



### GTx85082 WB Image

WB analysis of Jurkat cell lysate using GTx85082 UEV1A antibody.

Working concentration : (A) 1, (B) 2, and (C) 4  $\mu$ g/ml



For full product information, images and publications, please visit our [website](https://www.genetex.com).