

Neurturin antibody

Cat. No. GTX85089

Host	Rabbit
Clonality	Polyclonal
Isotype	IgG
Applications	WB, IHC-P, ELISA
Reactivity	Human, Mouse

Package
100 µg

Applications

Application Note

*Optimal dilutions/concentrations should be determined by the researcher.

Suggested dilution	Recommended dilution
WB	Assay dependent
IHC-P	5 µg/mL
ELISA	Assay dependent

Not tested in other applications.

Calculated MW 22 kDa. ([Note](#))

Properties

Form	Liquid
Buffer	PBS
Preservative	0.02% Sodium azide
Storage	Store as concentrated solution. Centrifuge briefly prior to opening vial. For short-term storage (1-2 weeks), store at 4°C. For long-term storage, aliquot and store at -20°C or below. Avoid multiple freeze-thaw cycles.
Concentration	Batch dependent (Please refer to the vial label for the specific concentration.)
Immunogen	Neurturin antibody was raised against a 16 amino acid peptide near the carboxy terminus of human Neurturin. The immunogen is located within the last 50 amino acids of Neurturin.
Purification	Purified by antigen-affinity chromatography
Conjugation	Unconjugated

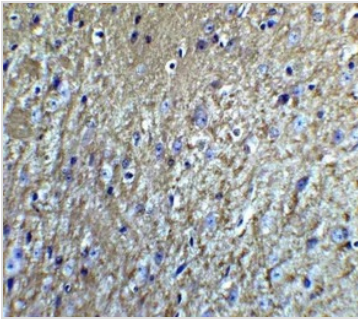
Note

For laboratory research use only. Not for any clinical, therapeutic, or diagnostic use in humans or animals. Not for animal or human consumption.

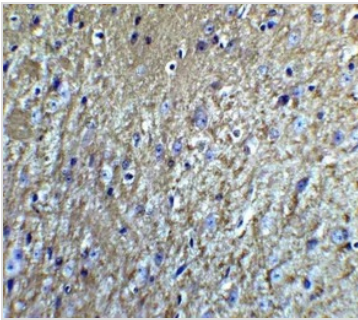
Purchasers shall not, and agree not to enable third parties to, analyze, copy, reverse engineer or otherwise attempt to determine the structure or sequence of the product.



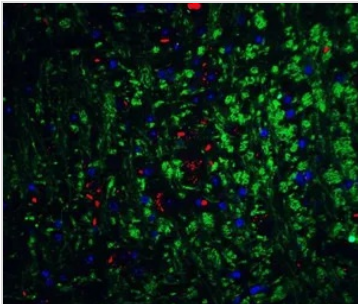
For full product information, images and publications, please visit our [website](#).

DATA IMAGES

GTx85089 IHC-P Image

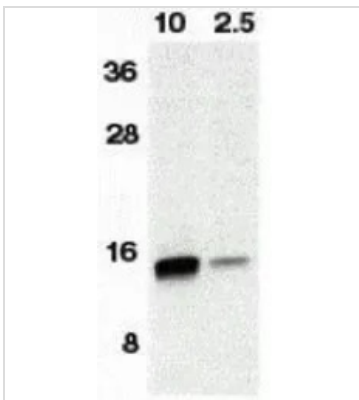
IHC-P analysis of mouse brain tissue using GTx85089 Neurturin antibody.
Working concentration : 5 µg/ml


GTx85089 IHC-P Image

IHC-P analysis of human brain tissue using GTx85089 Neurturin antibody.
Working concentration : 5 µg/ml


GTx85089 IHC-P Image

IHC-P analysis of mouse brain tissue using GTx85089 Neurturin antibody.
Working concentration : 20 µg/ml
Green : Primary antibody
Blue : DAPI
Red : Actin


GTx85089 WB Image

WB analysis of HeLa cell lysate containing 10 or 2.5 ng of full length recombinant NTN protein using GTx85089 Neurturin antibody.
Working concentration : 1:500



For full product information, images and publications, please visit our [website](#).