

## B-Raf antibody

Cat. No. GTX85102

Host	Chicken
Clonality	Polyclonal
Isotype	IgY
Applications	WB, ELISA
Reactivity	Human, Mouse, Rat

Package  
100 µg

## Applications

## Application Note

\*Optimal dilutions/concentrations should be determined by the researcher.

Suggested dilution	Recommended dilution
WB	0.5-2 µg/mL
ELISA	Assay dependent

Not tested in other applications.

Calculated MW 84 kDa. ( [Note](#) )

## Properties

Form	Liquid
Buffer	PBS
Preservative	0.02% Sodium azide
Storage	Store as concentrated solution. Centrifuge briefly prior to opening vial. For short-term storage (1-2 weeks), store at 4°C. For long-term storage, aliquot and store at -20°C or below. Avoid multiple freeze-thaw cycles.
Concentration	1 mg/ml (Please refer to the vial label for the specific concentration.)
Immunogen	B-raf antibody was raised against an 18 amino acid synthetic peptide near the center of human B-raf. The immunogen is located within amino acids 330 - 380 of B-raf.
Purification	Purified by antigen-affinity chromatography
Conjugation	Unconjugated

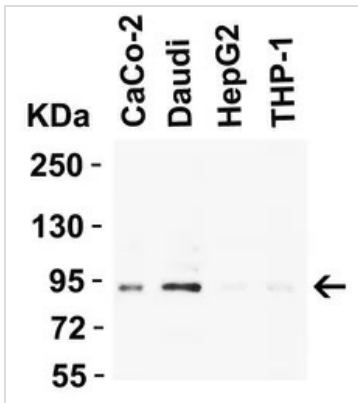
## Note

For laboratory research use only. Not for any clinical, therapeutic, or diagnostic use in humans or animals. Not for animal or human consumption.

Purchasers shall not, and agree not to enable third parties to, analyze, copy, reverse engineer or otherwise attempt to determine the structure or sequence of the product.



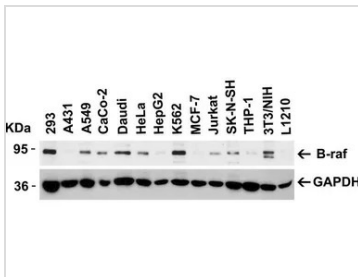
For full product information, images and publications, please visit our [website](#).

**DATA IMAGES**

**GTx85102 WB Image**

WB analysis of various samples using GTx85102 B-Raf antibody.

Dilution : 0.5µg/mL

Loading : 15µg of lysates per lane


**GTx85102 WB Image**

WB analysis of various samples using GTx85102 B-Raf antibody.

Dilution : 0.5µg/mL

Loading : 15µg of lysates per lane



For full product information, images and publications, please visit our [website](https://www.genetex.com).