

# Albumin antibody

**Cat. No. GTX85111**

|                     |                   |
|---------------------|-------------------|
| <b>Host</b>         | Chicken           |
| <b>Clonality</b>    | Polyclonal        |
| <b>Isotype</b>      | IgY               |
| <b>Applications</b> | WB, IHC-P, ELISA  |
| <b>Reactivity</b>   | Human, Mouse, Rat |

**Package**  
100 µg

## Applications

### Application Note

\*Optimal dilutions/concentrations should be determined by the researcher.

| Suggested dilution | Recommended dilution |
|--------------------|----------------------|
| WB                 | 1 - 2 µg/mL          |
| IHC-P              | 2.5 µg/mL            |
| ELISA              | Assay dependent      |

Not tested in other applications.

**Calculated MW** 69 kDa. ( [Note](#) )

## Properties

|                      |  |
|----------------------|--|
| <b>Form</b>          | Liquid   |
| <b>Buffer</b>        | PBS  |
| <b>Preservative</b>  | 0.02% Sodium azide   |
| <b>Storage</b>       | Store as concentrated solution. Centrifuge briefly prior to opening vial. For short-term storage (1-2 weeks), store at 4°C. For long-term storage, aliquot and store at -20°C or below. Avoid multiple freeze-thaw cycles. |
| <b>Concentration</b> | 1 mg/ml (Please refer to the vial label for the specific concentration.)   |
| <b>Immunogen</b>     | Albumin antibody was raised against a 13 amino acid synthetic peptide near the center of human Albumin. The immunogen is located within amino acids 340 - 390 of Albumin.  |
| <b>Purification</b>  | Purified by antigen-affinity chromatography  |
| <b>Conjugation</b>   | Unconjugated   |

### Note

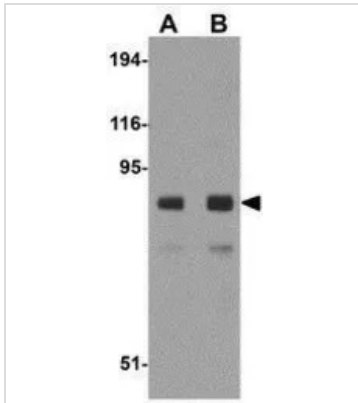
For laboratory research use only. Not for any clinical, therapeutic, or diagnostic use in humans or animals. Not for animal or human consumption.

Purchasers shall not, and agree not to enable third parties to, analyze, copy, reverse engineer or otherwise attempt to determine the structure or sequence of the product.



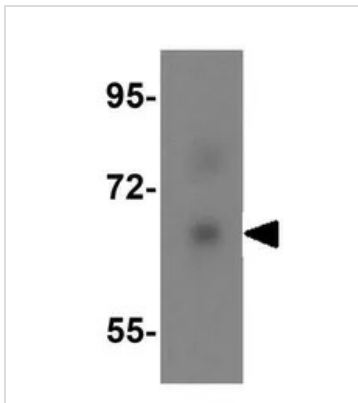
For full product information, images and publications, please visit our [website](#).

## DATA IMAGES



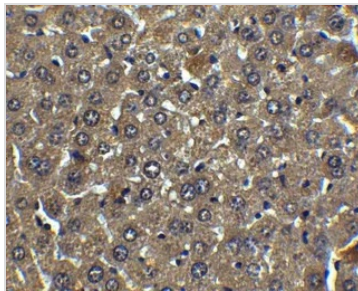
### GTx85111 WB Image

WB analysis of mouse liver tissue lysate using GTx85111 Albumin antibody.  
Working concentration : (A) 1 and (B) 2 µg/ml



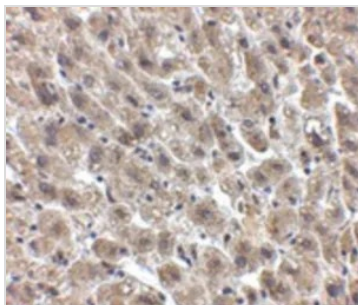
### GTx85111 WB Image

WB analysis of human liver tissue lysate using GTx85111 Albumin antibody.  
Working concentration : 0.25 µg/ml



### GTx85111 IHC-P Image

IHC-P analysis of mouse liver tissue using GTx85111 Albumin antibody.  
Working concentration : 5 µg/ml



### GTx85111 IHC-P Image

IHC-P analysis of human liver tissue using GTx85111 Albumin antibody.  
Working concentration : 2.5 µg/ml



For full product information, images and publications, please visit our [website](https://www.genetex.com).