

CDC42 antibody

Cat. No. GTX85114

Host	Chicken
Clonality	Polyclonal
Isotype	IgY
Applications	WB, ELISA
Reactivity	Human, Mouse, Rat

References (1)
 Package
 100 µg

Applications

Application Note

*Optimal dilutions/concentrations should be determined by the researcher.

Suggested dilution	Recommended dilution
WB	0.5 - 1 µg/mL
ELISA	Assay dependent

Not tested in other applications.

Calculated MW 21 kDa. ([Note](#))

Properties

Form	Liquid
Buffer	PBS
Preservative	0.02% Sodium azide
Storage	Store as concentrated solution. Centrifuge briefly prior to opening vial. Store at 4°C.
Concentration	1 mg/ml (Please refer to the vial label for the specific concentration.)
Immunogen	CDC42 antibody was raised against a 17 amino acid synthetic peptide near the amino terminus of human CDC42. The immunogen is located within amino acids 40 - 90 of CDC42.
Purification	Purified by antigen-affinity chromatography
Conjugation	Unconjugated

Note

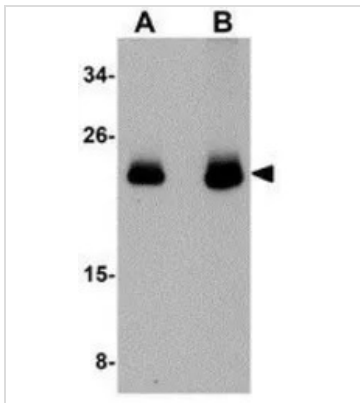
For laboratory research use only. Not for any clinical, therapeutic, or diagnostic use in humans or animals. Not for animal or human consumption.

Purchasers shall not, and agree not to enable third parties to, analyze, copy, reverse engineer or otherwise attempt to determine the structure or sequence of the product.



For full product information, images and publications, please visit our [website](#).

DATA IMAGES

**GTX85114 WB Image**

WB analysis of human brain tissue lysate using GTX85114 CDC42 antibody.

Working concentration : (A) 0.5 and (B) 1 µg/ml



For full product information, images and publications, please visit our [website](#).