

## ZIP5 antibody

Cat. No. GTX85132

Host	Rabbit
Clonality	Polyclonal
Isotype	IgG
Applications	WB, IHC-P, ELISA
Reactivity	Human, Mouse

Package  
100 µg

## Applications

## Application Note

\*Optimal dilutions/concentrations should be determined by the researcher.

Suggested dilution	Recommended dilution
WB	1 - 2 µg/mL
IHC-P	2.5 µg/mL
ELISA	Assay dependent

Not tested in other applications.

Calculated MW 56 kDa. ( [Note](#) )

## Properties

Form	Liquid
Buffer	PBS
Preservative	0.02% Sodium azide
Storage	Store as concentrated solution. Centrifuge briefly prior to opening vial. Store at 4°C.
Concentration	1 mg/ml (Please refer to the vial label for the specific concentration.)
Immunogen	ZIP5 antibody was raised against a 17 amino acid synthetic peptide near the center of human ZIP5. The immunogen is located within amino acids 330 - 380 of ZIP5.
Purification	Purified by antigen-affinity chromatography
Conjugation	Unconjugated

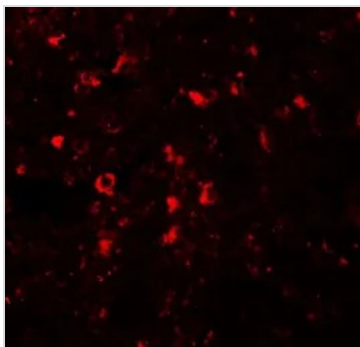
## Note

For laboratory research use only. Not for any clinical, therapeutic, or diagnostic use in humans or animals. Not for animal or human consumption.

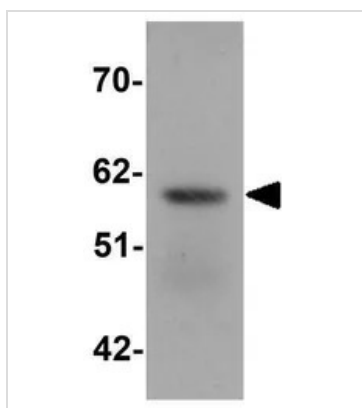
Purchasers shall not, and agree not to enable third parties to, analyze, copy, reverse engineer or otherwise attempt to determine the structure or sequence of the product.



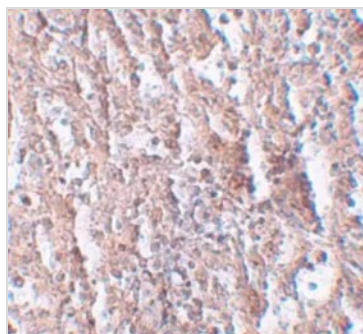
For full product information, images and publications, please visit our [website](#).

**DATA IMAGES**

**GTX85132 IHC-P Image**

IHC-P analysis of human spleen tissue using GTX85132 ZIP5 antibody.  
Working concentration : 20 µg/ml


**GTX85132 WB Image**

WB analysis of human spleen tissue lysate using GTX85132 ZIP5 antibody.  
Working concentration : 1 µg/ml


**GTX85132 IHC-P Image**

IHC-P analysis of human spleen tissue using GTX85132 ZIP5 antibody.  
Working concentration : 2.5 µg/ml



For full product information, images and publications, please visit our [website](https://www.genetex.com).