

ZIP3 antibody

Cat. No. GTX85133

Host	Rabbit
Clonality	Polyclonal
Isotype	IgG
Applications	WB, IHC-P, ELISA
Reactivity	Human, Mouse

Package
100 µg

Applications

Application Note

*Optimal dilutions/concentrations should be determined by the researcher.

Suggested dilution	Recommended dilution
WB	1 µg/mL
IHC-P	5 µg/mL
ELISA	Assay dependent

Not tested in other applications.

Calculated MW 34 kDa. ([Note](#))

Properties

Form	Liquid
Buffer	PBS
Preservative	0.02% Sodium azide
Storage	Store as concentrated solution. Centrifuge briefly prior to opening vial. For short-term storage (1-2 weeks), store at 4°C. For long-term storage, aliquot and store at -20°C or below. Avoid multiple freeze-thaw cycles.
Concentration	1 mg/ml (Please refer to the vial label for the specific concentration.)
Immunogen	ZIP3 antibody was raised against a 16 amino acid synthetic peptide near the center of human ZIP3. The immunogen is located within amino acids 110 - 160 of ZIP3.
Purification	Purified by antigen-affinity chromatography
Conjugation	Unconjugated

Note

For laboratory research use only. Not for any clinical, therapeutic, or diagnostic use in humans or animals. Not for animal or human consumption.

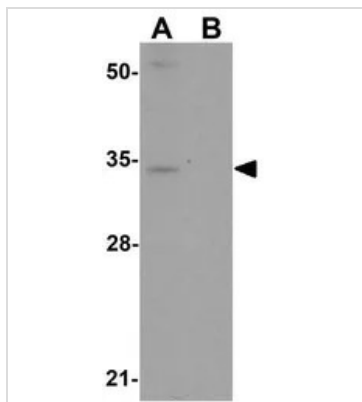
Purchasers shall not, and agree not to enable third parties to, analyze, copy, reverse engineer or otherwise attempt to determine the structure or sequence of the product.



For full product information, images and publications, please visit our [website](#).

Date 2026 / 01 / 02 Page 1 of 2

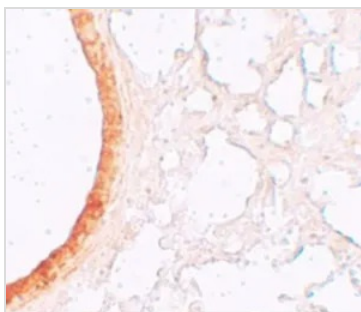
DATA IMAGES



GTx85133 WB Image

WB analysis of mouse lung tissue lysate in (A) the absence and (B) the presence of blocking peptide using GTx85133 ZIP3 antibody.

Working concentration : 1 µg/ml



GTx85133 IHC-P Image

IHC-P analysis of mouse lung tissue using GTx85133 ZIP3 antibody.

Working concentration : 5 µg/ml



For full product information, images and publications, please visit our [website](https://www.genetex.com).