

## ZIP1 antibody

Cat. No. GTX85135

|                     |                  |
|---------------------|------------------|
| <b>Host</b>         | Rabbit           |
| <b>Clonality</b>    | Polyclonal       |
| <b>Isotype</b>      | IgG              |
| <b>Applications</b> | WB, IHC-P, ELISA |
| <b>Reactivity</b>   | Human, Mouse     |

References ( 2 )

Package

100 µg

## Applications

## Application Note

\*Optimal dilutions/concentrations should be determined by the researcher.

| Suggested dilution | Recommended dilution |
|--------------------|----------------------|
| WB                 | 1 - 2 µg/mL          |
| IHC-P              | 2.5 µg/mL            |
| ELISA              | Assay dependent      |

Not tested in other applications.

**Calculated MW** 34 kDa. ( [Note](#) )

## Product Note

At least two isoforms of ZIP1 are known to exist; this antibody will detect both isoforms. ZIP1 antibody is predicted not to cross-react with other ZIP family proteins.

## Properties

|                      |  |
|----------------------|--|
| <b>Form</b>          | Liquid   |
| <b>Buffer</b>        | PBS  |
| <b>Preservative</b>  | 0.02% Sodium azide   |
| <b>Storage</b>       | Store as concentrated solution. Centrifuge briefly prior to opening vial. For short-term storage (1-2 weeks), store at 4°C. For long-term storage, aliquot and store at -20°C or below. Avoid multiple freeze-thaw cycles. |
| <b>Concentration</b> | 1 mg/ml (Please refer to the vial label for the specific concentration.)   |
| <b>Immunogen</b>     | ZIP1 antibody was raised against a 16 amino acid synthetic peptide near the amino terminus of human ZIP1. The immunogen is located within amino acids 40 - 90 of ZIP1.   |
| <b>Purification</b>  | Purified by antigen-affinity chromatography  |
| <b>Conjugation</b>   | Unconjugated   |



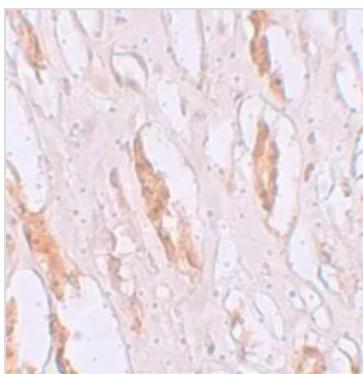
For full product information, images and publications, please visit our [website](#).

For laboratory research use only. Not for any clinical, therapeutic, or diagnostic use in humans or animals. Not for animal or human consumption.

**Note**

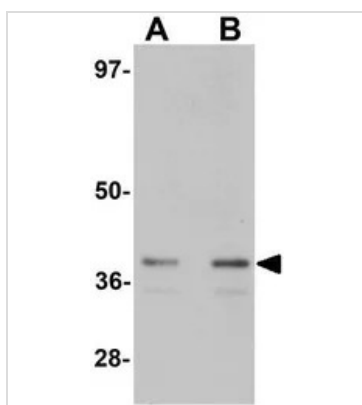
Purchasers shall not, and agree not to enable third parties to, analyze, copy, reverse engineer or otherwise attempt to determine the structure or sequence of the product.

## DATA IMAGES

**GTX85135 IHC-P Image**

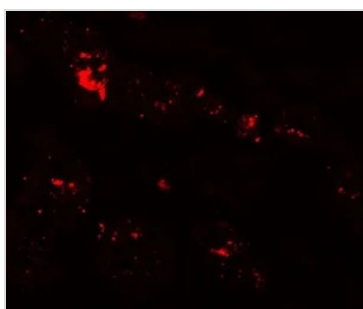
IHC-P analysis of human kidney tissue using GTX85135 ZIP1 antibody.

Working concentration : 2.5 µg/ml

**GTX85135 WB Image**

WB analysis of mouse kidney tissue lysate using GTX85135 ZIP1 antibody.

Working concentration : (A) 1 and (B) 2 µg/ml

**GTX85135 IHC-P Image**

IHC-P analysis of human kidney tissue using GTX85135 ZIP1 antibody.

Working concentration : 20 µg/ml



For full product information, images and publications, please visit our [website](#).