

# MFSD2A antibody

**Cat. No. GTX85147**

<b>Host</b>	Rabbit
<b>Clonality</b>	Polyclonal
<b>Isotype</b>	IgG
<b>Applications</b>	WB, IHC-P, ELISA
<b>Reactivity</b>	Human, Mouse, Rat

**Package**  
100 µg

## Applications

### Application Note

\*Optimal dilutions/concentrations should be determined by the researcher.

Suggested dilution	Recommended dilution
WB	1 - 2 µg/mL
IHC-P	5 µg/mL
ELISA	Assay dependent

Not tested in other applications.

**Calculated MW** 60 kDa. ( [Note](#) )

## Properties

<b>Form</b>	Liquid
<b>Buffer</b>	PBS
<b>Preservative</b>	0.02% Sodium azide
<b>Storage</b>	Store as concentrated solution. Centrifuge briefly prior to opening vial. For short-term storage (1-2 weeks), store at 4°C. For long-term storage, aliquot and store at -20°C or below. Avoid multiple freeze-thaw cycles.
<b>Concentration</b>	1 mg/ml (Please refer to the vial label for the specific concentration.)
<b>Immunogen</b>	MFSD2A antibody was raised against an 18 amino acid synthetic peptide near the carboxy terminus of human MFSD2A. The immunogen is located within the last 50 amino acids of MFSD2A.
<b>Purification</b>	Purified by antigen-affinity chromatography
<b>Conjugation</b>	Unconjugated

### Note

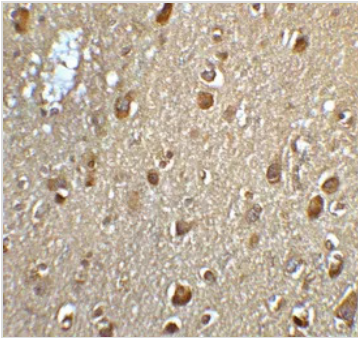
For laboratory research use only. Not for any clinical, therapeutic, or diagnostic use in humans or animals. Not for animal or human consumption.

Purchasers shall not, and agree not to enable third parties to, analyze, copy, reverse engineer or otherwise attempt to determine the structure or sequence of the product.



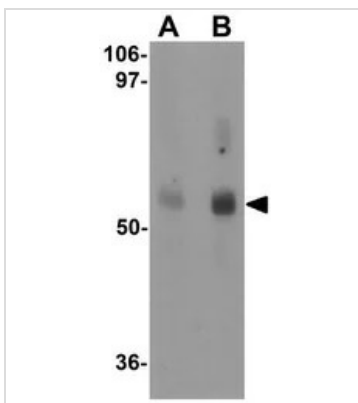
For full product information, images and publications, please visit our [website](#).

## DATA IMAGES



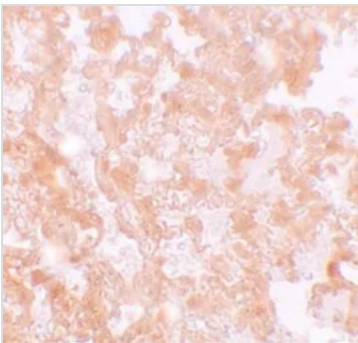
### GTX85147 IHC-P Image

IHC-P analysis of human brain tissue using GTX85147 MFSD2A antibody.  
Dilution : 5 µg/ml



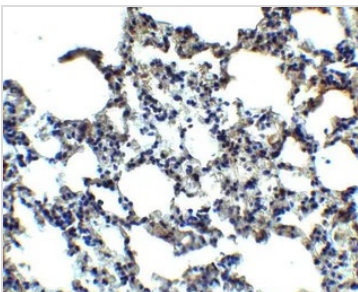
### GTX85147 WB Image

WB analysis of rat lung tissue lysate using GTX85147 MFSD2A antibody.  
Working concentration : (A) 1 and (B) 2 µg/ml



### GTX85147 IHC-P Image

IHC-P analysis of rat lung tissue using GTX85147 MFSD2A antibody.  
Working concentration : 5 µg/ml



### GTX85147 IHC-P Image

IHC-P analysis of mouse lung tissue using GTX85147 MFSD2A antibody.  
Working concentration : 2.5 µg/ml



For full product information, images and publications, please visit our [website](https://www.genetex.com).