

Pappalysin 2 antibody

Cat. No. GTX85150

Host	Rabbit
Clonality	Polyclonal
Isotype	IgG
Applications	WB, ICC/IF, ELISA
Reactivity	Human, Mouse, Rat

Package
100 µg

Applications

Application Note

*Optimal dilutions/concentrations should be determined by the researcher.

Suggested dilution	Recommended dilution
WB	1 µg/mL
ICC/IF	10 µg/mL
ELISA	Assay dependent

Not tested in other applications.

Calculated MW 199 kDa. ([Note](#))

Properties

Form	Liquid
Buffer	PBS
Preservative	0.02% Sodium azide
Storage	Store as concentrated solution. Centrifuge briefly prior to opening vial. For short-term storage (1-2 weeks), store at 4°C. For long-term storage, aliquot and store at -20°C or below. Avoid multiple freeze-thaw cycles.
Concentration	1 mg/ml (Please refer to the vial label for the specific concentration.)
Immunogen	PLAC3 antibody was raised against a 15 amino acid synthetic peptide near the amino terminus of human PLAC3. The immunogen is located within amino acids 450 - 500 of PLAC3.
Purification	Purified by antigen-affinity chromatography
Conjugation	Unconjugated

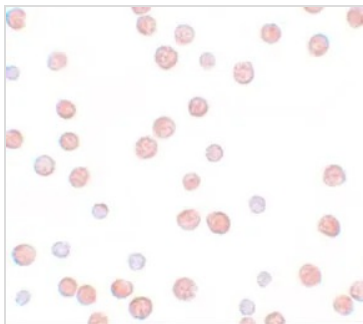
Note

For laboratory research use only. Not for any clinical, therapeutic, or diagnostic use in humans or animals. Not for animal or human consumption.

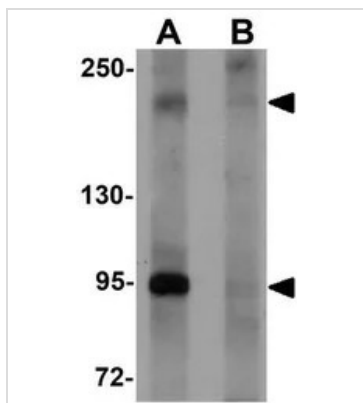
Purchasers shall not, and agree not to enable third parties to, analyze, copy, reverse engineer or otherwise attempt to determine the structure or sequence of the product.



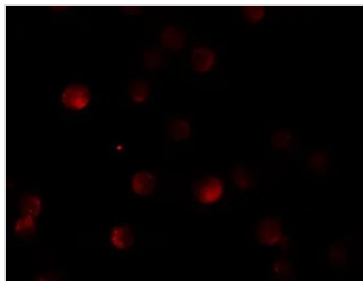
For full product information, images and publications, please visit our [website](#).

DATA IMAGES

GTX85150 ICC/IF Image

ICC/IF analysis of HeLa cells using GTX85150 PLAC3 antibody.
Working concentration : 10 µg/ml


GTX85150 WB Image

WB analysis of HeLa cell lysate in (A) the absence and (B) the presence of blocking peptide using GTX85150 PLAC3 antibody.
Working concentration : 1 µg/ml


GTX85150 ICC/IF Image

ICC/IF analysis of HeLa cells using GTX85150 PLAC3 antibody.
Working concentration : 20 µg/ml



For full product information, images and publications, please visit our [website](https://www.genetex.com).