

SCUBE2 antibody

Cat. No. GTX85173

Host	Rabbit
Clonality	Polyclonal
Isotype	IgG
Applications	WB, ICC/IF, FCM, ELISA
Reactivity	Human, Rat

References (4)

Package

100 µg

Applications

Application Note

*Optimal dilutions/concentrations should be determined by the researcher.

Suggested dilution	Recommended dilution
WB	1 µg/mL
ICC/IF	20 µg/mL
FCM	Assay dependent
ELISA	Assay dependent

Not tested in other applications.

Calculated MW 110 kDa. ([Note](#))

Properties

Form	Liquid
Buffer	PBS
Preservative	0.02% Sodium azide
Storage	Store as concentrated solution. Centrifuge briefly prior to opening vial. For short-term storage (1-2 weeks), store at 4°C. For long-term storage, aliquot and store at -20°C or below. Avoid multiple freeze-thaw cycles.
Concentration	1 mg/ml (Please refer to the vial label for the specific concentration.)
Immunogen	SCUBE2 antibody was raised against a 17 amino acid synthetic peptide near the center of human SCUBE2. The immunogen is located within amino acids 480 - 530 of SCUBE2.
Purification	Purified by antigen-affinity chromatography
Conjugation	Unconjugated



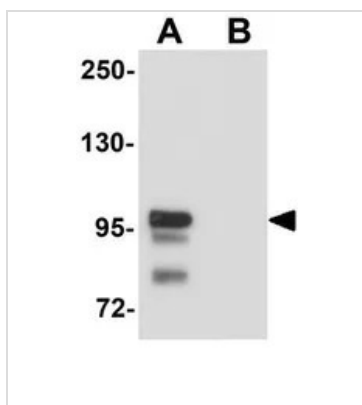
For full product information, images and publications, please visit our [website](#).

For laboratory research use only. Not for any clinical, therapeutic, or diagnostic use in humans or animals. Not for animal or human consumption.

Note

Purchasers shall not, and agree not to enable third parties to, analyze, copy, reverse engineer or otherwise attempt to determine the structure or sequence of the product.

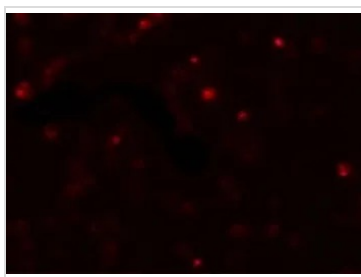
DATA IMAGES



GTx85173 WB Image

WB analysis of Daudi cell lysate in (A) the absence and (B) the presence of blocking peptide using GTx85173 SCUBE2 antibody.

Working concentration : 1 µg/ml



GTx85173 ICC/IF Image

ICC/IF analysis of Daudi cells using GTx85173 SCUBE2 antibody.

Working concentration : 20 µg/ml



GTx85173 ICC/IF Image

ICC/IF analysis of Daudi cells using GTx85173 SCUBE2 antibody.

Working concentration : 20 µg/ml



For full product information, images and publications, please visit our [website](https://www.genetex.com).