

# APC13 antibody

**Cat. No. GTX85186**

<b>Host</b>	Rabbit
<b>Clonality</b>	Polyclonal
<b>Isotype</b>	IgG
<b>Applications</b>	WB, ICC/IF, ELISA
<b>Reactivity</b>	Human, Mouse, Rat

**Package**  
100 µg

## Applications

### Application Note

\*Optimal dilutions/concentrations should be determined by the researcher.

Suggested dilution	Recommended dilution
WB	1 µg/mL
ICC/IF	20 µg/mL
ELISA	Assay dependent

Not tested in other applications.

**Calculated MW** 9 kDa. ( [Note](#) )

## Properties

<b>Form</b>	Liquid
<b>Buffer</b>	PBS
<b>Preservative</b>	0.02% Sodium azide
<b>Storage</b>	Store as concentrated solution. Centrifuge briefly prior to opening vial. For short-term storage (1-2 weeks), store at 4°C. For long-term storage, aliquot and store at -20°C or below. Avoid multiple freeze-thaw cycles.
<b>Concentration</b>	1 mg/ml (Please refer to the vial label for the specific concentration.)
<b>Immunogen</b>	APC13 antibody was raised against a 17 amino acid synthetic peptide near the center of human APC13. The immunogen is located within the last 50 amino acids of APC13.
<b>Purification</b>	Purified by antigen-affinity chromatography
<b>Conjugation</b>	Unconjugated

### Note

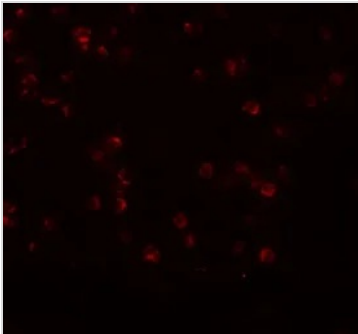
For laboratory research use only. Not for any clinical, therapeutic, or diagnostic use in humans or animals. Not for animal or human consumption.

Purchasers shall not, and agree not to enable third parties to, analyze, copy, reverse engineer or otherwise attempt to determine the structure or sequence of the product.



For full product information, images and publications, please visit our [website](#).

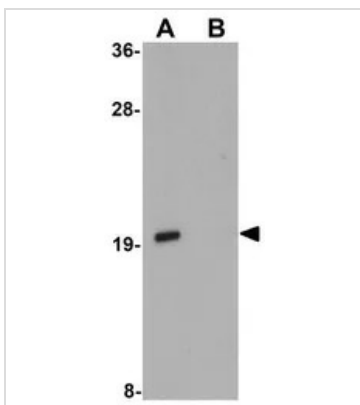
## DATA IMAGES



### GTX85186 ICC/IF Image

ICC/IF analysis of Jurkat cells using GTX85186 APC13 antibody.

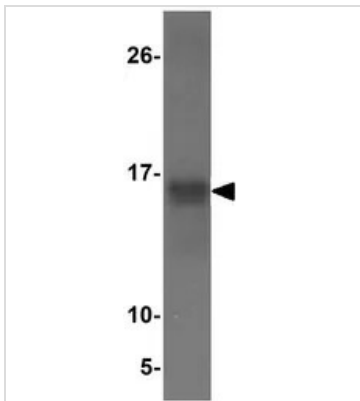
Working concentration : 20 µg/ml



### GTX85186 WB Image

WB analysis of Jurkat cell tissue lysate in (A) the absence and (B) the presence of blocking peptide using GTX85186 APC13 antibody.

Working concentration : 1 µg/ml



### GTX85186 WB Image

WB analysis of 25ng APC13 recombinant protein using GTX85186 APC13 antibody.

Working concentration : 1µg/ml



For full product information, images and publications, please visit our [website](https://www.genetex.com).