

## APC7 antibody

Cat. No. GTX85187

Host	Rabbit
Clonality	Polyclonal
Isotype	IgG
Applications	WB, IHC-P, ELISA
Reactivity	Human, Mouse, Rat

Package  
100 µg

## Applications

## Application Note

\*Optimal dilutions/concentrations should be determined by the researcher.

Suggested dilution	Recommended dilution
WB	1 - 2 µg/mL
IHC-P	20 µg/mL
ELISA	Assay dependent

Not tested in other applications.

Calculated MW 67 kDa. ( [Note](#) )

## Properties

Form	Liquid
Buffer	PBS
Preservative	0.02% Sodium azide
Storage	Store as concentrated solution. Centrifuge briefly prior to opening vial. For short-term storage (1-2 weeks), store at 4°C. For long-term storage, aliquot and store at -20°C or below. Avoid multiple freeze-thaw cycles.
Concentration	1 mg/ml (Please refer to the vial label for the specific concentration.)
Immunogen	APC7 antibody was raised against an 18 amino acid synthetic peptide near the carboxy terminus of human APC7. The immunogen is located within amino acids 520 - 570 of APC7.
Purification	Purified by antigen-affinity chromatography
Conjugation	Unconjugated

## Note

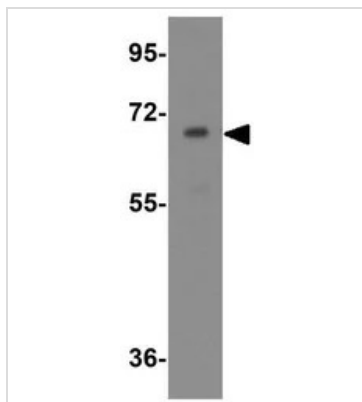
For laboratory research use only. Not for any clinical, therapeutic, or diagnostic use in humans or animals. Not for animal or human consumption.

Purchasers shall not, and agree not to enable third parties to, analyze, copy, reverse engineer or otherwise attempt to determine the structure or sequence of the product.



For full product information, images and publications, please visit our [website](#).

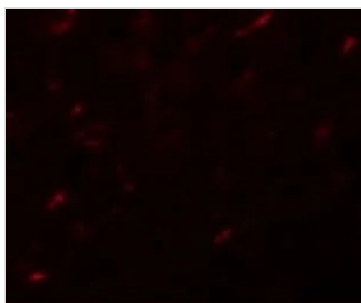
## DATA IMAGES



### GTx85187 WB Image

WB analysis of HeLa cell lysate using GTx85187 APC7 antibody.

Working concentration : 1 µg/ml



### GTx85187 IHC-P Image

IHC-P analysis of rat kidney tissue using GTx85187 APC7 antibody.

Working concentration : 20 µg/ml



For full product information, images and publications, please visit our [website](#).