

## WDR40A antibody

Cat. No. GTX85189

Host	Chicken
Clonality	Polyclonal
Isotype	IgY
Applications	WB, ICC/IF, ELISA
Reactivity	Human, Mouse, Rat

Package  
100 µg

## Applications

## Application Note

\*Optimal dilutions/concentrations should be determined by the researcher.

Suggested dilution	Recommended dilution
WB	1 µg/mL
ICC/IF	2.5 µg/mL
ELISA	Assay dependent

Not tested in other applications.

Calculated MW 51 kDa. ( [Note](#) )

## Properties

Form	Liquid
Buffer	PBS
Preservative	0.02% Sodium azide
Storage	Store as concentrated solution. Centrifuge briefly prior to opening vial. For short-term storage (1-2 weeks), store at 4°C. For long-term storage, aliquot and store at -20°C or below. Avoid multiple freeze-thaw cycles.
Concentration	1 mg/ml (Please refer to the vial label for the specific concentration.)
Immunogen	WDR40A antibody was raised against a 15 amino acid synthetic peptide near the carboxy terminus of human WDR40A. The immunogen is located within amino acids 390 - 440 of WDR40A.
Purification	Purified by antigen-affinity chromatography
Conjugation	Unconjugated

## Note

For laboratory research use only. Not for any clinical, therapeutic, or diagnostic use in humans or animals. Not for animal or human consumption.

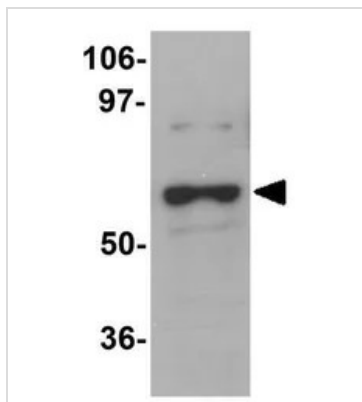
Purchasers shall not, and agree not to enable third parties to, analyze, copy, reverse engineer or otherwise attempt to determine the structure or sequence of the product.



For full product information, images and publications, please visit our [website](#).

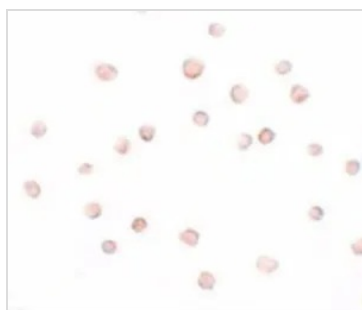
Date 2026 / 01 / 08 Page 1 of 2

## DATA IMAGES



### GTx85189 WB Image

WB analysis of 293 cell lysate using GTx85189 WDR40A antibody.  
Working concentration : 1 µg/ml



### GTx85189 ICC/IF Image

ICC/IF analysis of 293 cells using GTx85189 WDR40A antibody.  
Working concentration : 2.5 µg/ml



For full product information, images and publications, please visit our [website](#).