

# CALM antibody

**Cat. No. GTX85213**

|                    |                   |
|--------------------|-------------------|
| <b>Host</b>        | Rabbit            |
| <b>Clonality</b>   | Polyclonal        |
| <b>Isotype</b>     | IgG               |
| <b>Application</b> | WB, IHC-P, ELISA  |
| <b>Reactivity</b>  | Human, Mouse, Rat |

**Package**  
100 µg

## APPLICATION

### Application Note

\*Optimal dilutions/concentrations should be determined by the researcher.

| Suggested dilution | Recommended dilution |
|--------------------|----------------------|
| WB                 | 1 µg/mL              |
| IHC-P              | 20 µg/mL             |
| ELISA              | Assay dependent      |

Not tested in other applications.

**Calculated MW** 71 kDa. ( [Note](#) )

## PROPERTIES

|                      |  |
|----------------------|--|
| <b>Form</b>          | Liquid   |
| <b>Buffer</b>        | PBS  |
| <b>Preservative</b>  | 0.02% Sodium azide   |
| <b>Storage</b>       | Store as concentrated solution. Centrifuge briefly prior to opening vial. For short-term storage (1-2 weeks), store at 4°C. For long-term storage, aliquot and store at -20°C or below. Avoid multiple freeze-thaw cycles. |
| <b>Concentration</b> | 1 mg/ml (Please refer to the vial label for the specific concentration.)   |
| <b>Immunogen</b>     | PICALM antibody was raised against a 15 amino acid synthetic peptide from near the amino terminus of human PICALM. The immunogen is located within the first 50 amino acids of PICALM.                                     |
| <b>Purification</b>  | Purified by antigen-affinity chromatography  |
| <b>Conjugation</b>   | Unconjugated   |

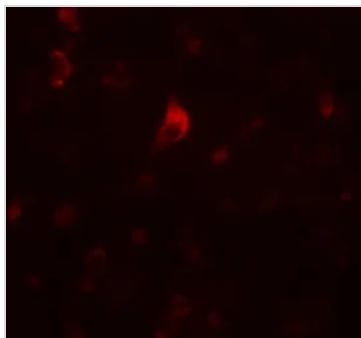
**Note** For laboratory research use only. Not for any clinical, therapeutic, or diagnostic use in humans or animals. Not for animal or human consumption.

Purchasers shall not, and agree not to enable third parties to, analyze, copy, reverse engineer or otherwise attempt to determine the structure or sequence of the product.



For full product information, images and publications, please visit our [website](#).

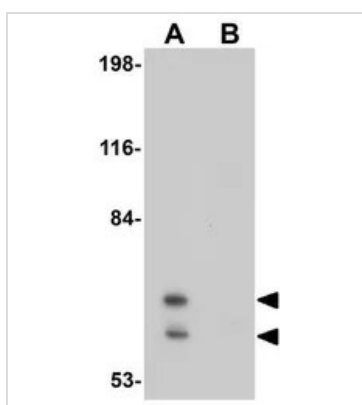
## DATA IMAGES



### GTx85213 IHC-P Image

IHC-P analysis of human brain tissue using GTx85213 CALM antibody.

Working concentration : 20 µg/ml



### GTx85213 WB Image

WB analysis of EL4 cell lysate in (A) the absence and (B) the presence of blocking peptide using GTx85213 CALM antibody.

Working concentration : 1 µg/ml



For full product information, images and publications, please visit our [website](#).