

TMEM38A antibody

Cat. No. GTX85221

Host	Rabbit
Clonality	Polyclonal
Isotype	IgG
Applications	WB, IHC-P, ELISA
Reactivity	Human, Mouse, Rat

Package
100 µg

Applications

Application Note

*Optimal dilutions/concentrations should be determined by the researcher.

Suggested dilution	Recommended dilution
WB	1 µg/mL
IHC-P	20 µg/mL
ELISA	Assay dependent

Not tested in other applications.

Calculated MW 33 kDa. ([Note](#))

Properties

Form	Liquid
Buffer	PBS
Preservative	0.02% Sodium azide
Storage	Store as concentrated solution. Centrifuge briefly prior to opening vial. For short-term storage (1-2 weeks), store at 4°C. For long-term storage, aliquot and store at -20°C or below. Avoid multiple freeze-thaw cycles.
Concentration	1 mg/ml (Please refer to the vial label for the specific concentration.)
Immunogen	TMEM38A antibody was raised against a 17 amino acid synthetic peptide from near the carboxy terminus of human TMEM38A. The immunogen is located within the last 50 amino acids of TMEM38A.
Purification	Purified by antigen-affinity chromatography
Conjugation	Unconjugated

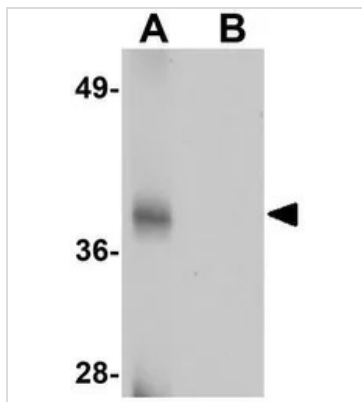
Note

For laboratory research use only. Not for any clinical, therapeutic, or diagnostic use in humans or animals. Not for animal or human consumption.

Purchasers shall not, and agree not to enable third parties to, analyze, copy, reverse engineer or otherwise attempt to determine the structure or sequence of the product.

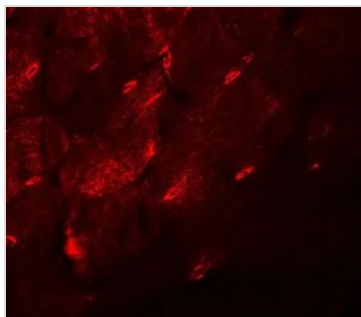


For full product information, images and publications, please visit our [website](#).

DATA IMAGES

GTX85221 WB Image

WB analysis of rat skeletal muscle tissue lysate in (A) the absence and (B) the presence of blocking peptide using GTX85221 TMEM38A antibody.

Working concentration : 1 µg/ml


GTX85221 IHC-P Image

IHC-P analysis of mouse skeletal muscle tissue using GTX85221 TMEM38A antibody.

Working concentration : 20 µg/ml



For full product information, images and publications, please visit our [website](https://www.genetex.com).