

KDM3A antibody

Cat. No. GTX85253

Host	Rabbit
Clonality	Polyclonal
Isotype	IgG
Applications	WB, IHC-P, ELISA
Reactivity	Human, Mouse, Rat

Package
100 µg

Applications

Application Note

*Optimal dilutions/concentrations should be determined by the researcher.

Suggested dilution	Recommended dilution
WB	1 µg/mL
IHC-P	5 µg/mL
ELISA	Assay dependent

Not tested in other applications.

Calculated MW	147 kDa. (Note)
Product Note	This antibody will not cross-react with JMJD1B or JMJD1C.

Properties

Form	Liquid
Buffer	PBS
Preservative	0.02% Sodium azide
Storage	Store as concentrated solution. Centrifuge briefly prior to opening vial. For short-term storage (1-2 weeks), store at 4°C. For long-term storage, aliquot and store at -20°C or below. Avoid multiple freeze-thaw cycles.
Concentration	1 mg/ml (Please refer to the vial label for the specific concentration.)
Immunogen	KDM3A antibody was raised against a 16 amino acid synthetic peptide from near the amino terminus of human KDM3A. The immunogen is located within amino acids 50 - 100 of KDM3A.
Purification	Purified by antigen-affinity chromatography
Conjugation	Unconjugated

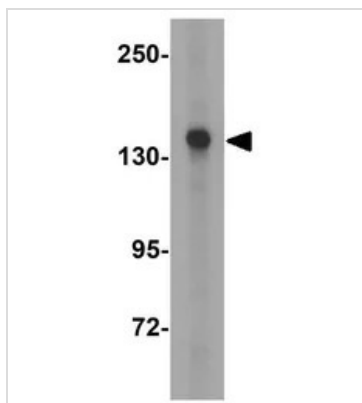
For full product information, images and publications, please visit our [website](#).

For laboratory research use only. Not for any clinical, therapeutic, or diagnostic use in humans or animals. Not for animal or human consumption.

Note

Purchasers shall not, and agree not to enable third parties to, analyze, copy, reverse engineer or otherwise attempt to determine the structure or sequence of the product.

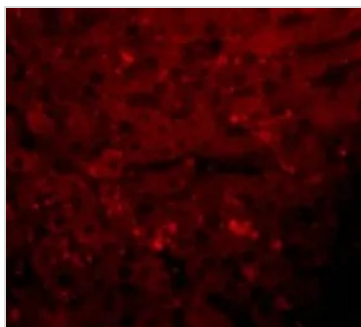
DATA IMAGES



GTX85253 WB Image

WB analysis of HepG2 cell lysate using GTX85253 KDM3A antibody.

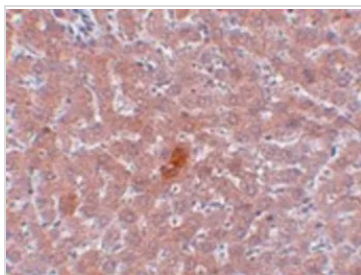
Working concentration : 1 µg/ml



GTX85253 IHC-P Image

IHC-P analysis of rat liver tissue using GTX85253 KDM3A antibody.

Working concentration : 20 µg/ml



GTX85253 IHC-P Image

IHC-P analysis of rat liver tissue using GTX85253 KDM3A antibody.

Working concentration : 5 µg/ml



For full product information, images and publications, please visit our [website](#).