

MATN3 antibody

Cat. No. GTX85286

Host	Rabbit
Clonality	Polyclonal
Isotype	IgG
Applications	WB, ICC/IF, ELISA
Reactivity	Human, Mouse, Rat

Package
100 µg

Applications

Application Note

*Optimal dilutions/concentrations should be determined by the researcher.

Suggested dilution	Recommended dilution
WB	1 - 2 µg/mL
ICC/IF	2.5 µg/mL
ELISA	Assay dependent

Not tested in other applications.

Calculated MW 53 kDa. ([Note](#))

Product Note This antibody is specific for MATN3 Internal

Properties

Form	Liquid
Buffer	PBS
Preservative	0.02% Sodium azide
Storage	Store as concentrated solution. Centrifuge briefly prior to opening vial. Store at 4°C.
Concentration	1 mg/ml (Please refer to the vial label for the specific concentration.)
Immunogen	MATN3 antibody was raised against a 13 amino acid synthetic peptide from near the center of human MATN3. The immunogen is located within amino acids 180 - 230 of MATN3.
Purification	Purified by antigen-affinity chromatography
Conjugation	Unconjugated



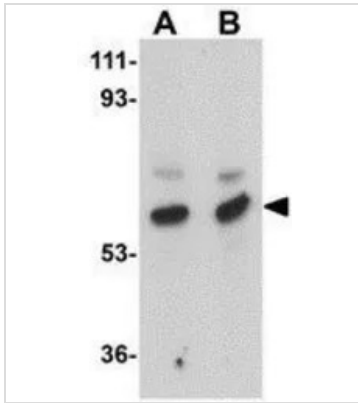
For full product information, images and publications, please visit our [website](#).

For laboratory research use only. Not for any clinical, therapeutic, or diagnostic use in humans or animals. Not for animal or human consumption.

Note

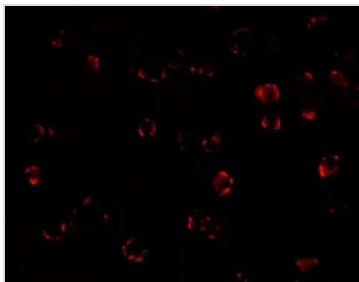
Purchasers shall not, and agree not to enable third parties to, analyze, copy, reverse engineer or otherwise attempt to determine the structure or sequence of the product.

DATA IMAGES



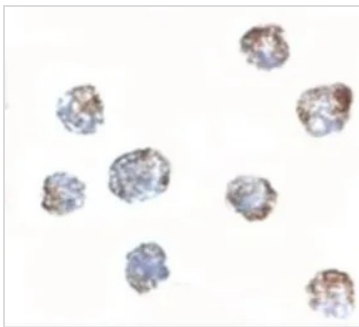
GTX85286 WB Image

WB analysis of rat thymus tissue lysate using GTX85286 MATN3 antibody.
Working concentration : (A) 1 and (B) 2 µg/ml



GTX85286 ICC/IF Image

ICC/IF analysis of 3T3 cells using GTX85286 MATN3 antibody.
Working concentration : 20 µg/ml



GTX85286 ICC/IF Image

ICC/IF analysis of 3T3 cells using GTX85286 MATN3 antibody.
Working concentration : 2.5 µg/ml



For full product information, images and publications, please visit our [website](https://www.genetex.com).