

MATN1 antibody

Cat. No. GTX85289

Host	Rabbit
Clonality	Polyclonal
Isotype	IgG
Applications	WB, IHC-P, ELISA
Reactivity	Human, Mouse, Rat

Package
100 µg

Applications

Application Note

*Optimal dilutions/concentrations should be determined by the researcher.

Suggested dilution	Recommended dilution
WB	1 - 2 µg/mL
IHC-P	5 µg/mL
ELISA	Assay dependent

Not tested in other applications.

Calculated MW	54 kDa. (Note)
Product Note	This antibody is specific for MATN1 C-Terminus

Properties

Form	Liquid
Buffer	PBS
Preservative	0.02% Sodium azide
Storage	Store as concentrated solution. Centrifuge briefly prior to opening vial. Store at 4°C.
Concentration	1 mg/ml (Please refer to the vial label for the specific concentration.)
Immunogen	MATN1 antibody was raised against a 13 amino acid synthetic peptide from near the carboxy terminus of human MATN1. The immunogen is located within amino acids 370 - 420 of MATN1.
Purification	Purified by antigen-affinity chromatography
Conjugation	Unconjugated



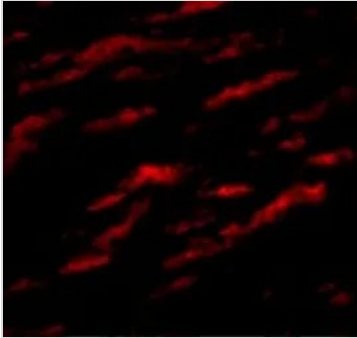
For full product information, images and publications, please visit our [website](#).

For laboratory research use only. Not for any clinical, therapeutic, or diagnostic use in humans or animals. Not for animal or human consumption.

Note

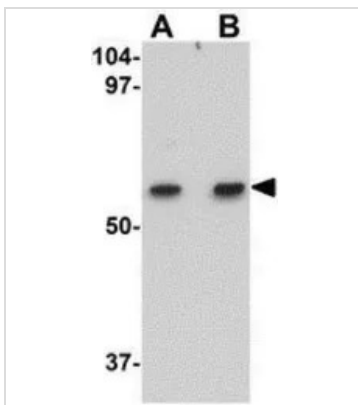
Purchasers shall not, and agree not to enable third parties to, analyze, copy, reverse engineer or otherwise attempt to determine the structure or sequence of the product.

DATA IMAGES



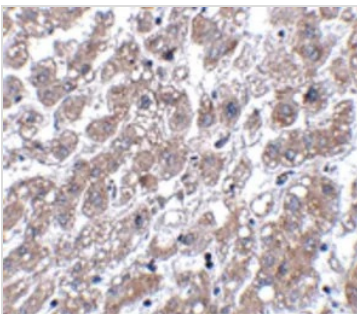
GTX85289 IHC-P Image

IHC-P analysis of human liver tissue using GTX85289 MATN1 antibody.
Working concentration : 20 µg/ml



GTX85289 WB Image

WB analysis of rat liver tissue lysate using GTX85289 MATN1 antibody.
Working concentration : (A) 1 and (B) 2 µg/ml



GTX85289 IHC-P Image

IHC-P analysis of human liver tissue using GTX85289 MATN1 antibody.
Working concentration : 5 µg/ml



For full product information, images and publications, please visit our [website](#).