

GNPDA2 antibody

Cat. No. GTX85346

Host	Rabbit
Clonality	Polyclonal
Isotype	IgG
Applications	WB, ICC/IF, IHC-P, ELISA
Reactivity	Human, Mouse

Package
100 µg

Applications

Application Note

*Optimal dilutions/concentrations should be determined by the researcher.

Suggested dilution	Recommended dilution
WB	1 µg/mL
ICC/IF	4 µg/mL
IHC-P	Assay dependent
ELISA	Assay dependent

Not tested in other applications.

Calculated MW 31 kDa. ([Note](#))**Product Note** GNPDA2 antibody is predicted to not cross-react with GNPDA1.

Properties

Form	Liquid
Buffer	PBS
Preservative	0.02% Sodium azide
Storage	Store as concentrated solution. Centrifuge briefly prior to opening vial. For short-term storage (1-2 weeks), store at 4°C. For long-term storage, aliquot and store at -20°C or below. Avoid multiple freeze-thaw cycles.
Concentration	1 mg/ml (Please refer to the vial label for the specific concentration.)
Immunogen	GNPDA2 antibody was raised against an 8 amino acid synthetic peptide near the carboxy terminus of human GNPDA2. The immunogen is located within the last 50 amino acids of GNPDA2.
Purification	Purified by antigen-affinity chromatography
Conjugation	Unconjugated



For full product information, images and publications, please visit our [website](#).

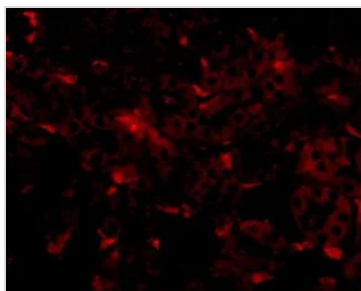
Date 2025 / 05 / 20 Page 1 of 2

For laboratory research use only. Not for any clinical, therapeutic, or diagnostic use in humans or animals. Not for animal or human consumption.

Note

Purchasers shall not, and agree not to enable third parties to, analyze, copy, reverse engineer or otherwise attempt to determine the structure or sequence of the product.

DATA IMAGES



GTx85346 IHC-P Image

IHC-P analysis of mouse kidney tissue using GTx85346 GNPDA2 antibody.

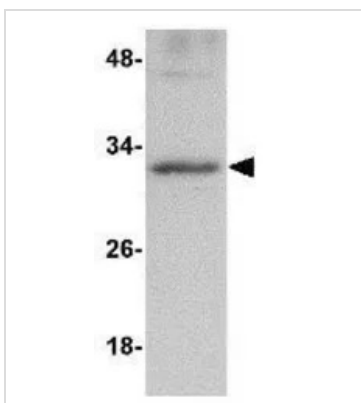
Working concentration : 20 µg/ml



GTx85346 ICC/IF Image

ICC/IF analysis of 293 cells using GTx85346 GNPDA2 antibody.

Working concentration : 4 µg/ml



GTx85346 WB Image

WB analysis of human kidney tissue lysate using GTx85346 GNPDA2 antibody.

Working concentration : 1 µg/ml



For full product information, images and publications, please visit our [website](#).