

PIG-Y antibody

Cat. No. GTX85355

Host	Rabbit
Clonality	Polyclonal
Isotype	IgG
Applications	WB, IHC-P, ELISA
Reactivity	Human, Mouse

Package
100 µg

Applications

Application Note

*Optimal dilutions/concentrations should be determined by the researcher.

Suggested dilution	Recommended dilution
WB	1 - 2 µg/mL
IHC-P	2.5 µg/mL
ELISA	Assay dependent

Not tested in other applications.

Calculated MW	8 kDa. (Note)
Product Note	This antibody only detects isoform 1 of PIG-Y.

Properties

Form	Liquid
Buffer	PBS
Preservative	0.02% Sodium azide
Storage	Store as concentrated solution. Centrifuge briefly prior to opening vial. For short-term storage (1-2 weeks), store at 4°C. For long-term storage, aliquot and store at -20°C or below. Avoid multiple freeze-thaw cycles.
Concentration	1 mg/ml (Please refer to the vial label for the specific concentration.)
Immunogen	PIG-Y antibody was raised against a 16 amino acid synthetic peptide near the center of human PIG-Y. The immunogen is located within amino acids 50 - 100 of PIG-Y.
Purification	Purified by antigen-affinity chromatography
Conjugation	Unconjugated



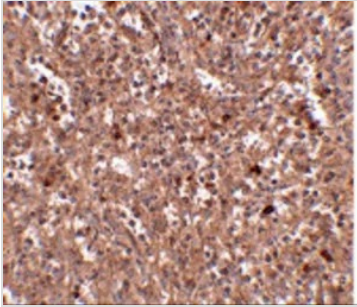
For full product information, images and publications, please visit our [website](#).

For laboratory research use only. Not for any clinical, therapeutic, or diagnostic use in humans or animals. Not for animal or human consumption.

Note

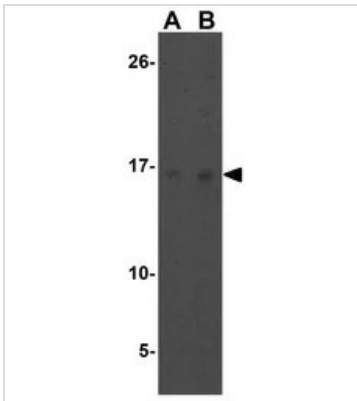
Purchasers shall not, and agree not to enable third parties to, analyze, copy, reverse engineer or otherwise attempt to determine the structure or sequence of the product.

DATA IMAGES



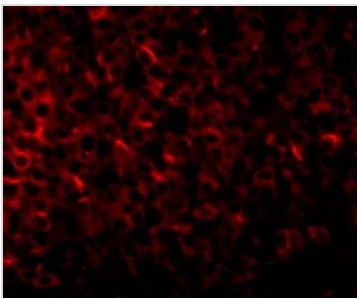
GTx85355 IHC-P Image

IHC-P analysis of human spleen tissue using GTx85355 PIG-Y antibody.
Working concentration : 2.5 µg/ml



GTx85355 WB Image

WB analysis of human liver tissue lysate using GTx85355 PIG-Y antibody.
Working concentration : (A) 1 and (B) 2 µg/ml



GTx85355 IHC-P Image

IHC-P analysis of human spleen tissue using GTx85355 PIG-Y antibody.
Working concentration : 20 µg/ml



For full product information, images and publications, please visit our [website](#).