

METTL7A antibody

Cat. No. GTX85369

Host	Rabbit
Clonality	Polyclonal
Isotype	IgG
Applications	WB, ICC/IF, ELISA
Reactivity	Human, Mouse

Package
100 µg

Applications

Application Note

*Optimal dilutions/concentrations should be determined by the researcher.

Suggested dilution	Recommended dilution
WB	2 µg/mL
ICC/IF	2 µg/mL
ELISA	Assay dependent

Not tested in other applications.

Calculated MW	28 kDa. (Note)
Product Note	At least two isoforms of Mettl7A are known to exist. This antibody is predicted to not cross-react with Mettl7B.

Properties

Form	Liquid
Buffer	PBS
Preservative	0.02% Sodium azide
Storage	Store as concentrated solution. Centrifuge briefly prior to opening vial. Store at 4°C.
Concentration	1 mg/ml (Please refer to the vial label for the specific concentration.)
Immunogen	MettL7A antibody was raised against a 13 amino acid synthetic peptide near the center of human Mettl7A. The immunogen is located within amino acids 130 - 180 of Mettl7A.
Purification	Purified by antigen-affinity chromatography
Conjugation	Unconjugated

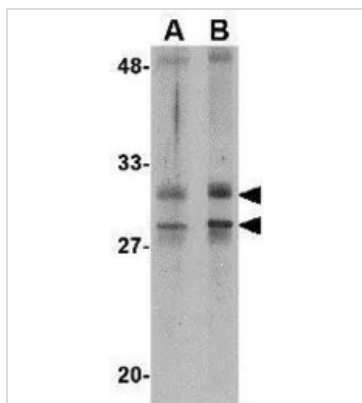
For full product information, images and publications, please visit our [website](#).

For laboratory research use only. Not for any clinical, therapeutic, or diagnostic use in humans or animals. Not for animal or human consumption.

Note

Purchasers shall not, and agree not to enable third parties to, analyze, copy, reverse engineer or otherwise attempt to determine the structure or sequence of the product.

DATA IMAGES



GTX85369 WB Image

WB analysis of MCF7 cell lysate using GTX85369 METTL7A antibody.

Working concentration : 2 µg/ml



GTX85369 ICC/IF Image

ICC/IF analysis of MCF7 cells using GTX85369 METTL7A antibody.

Working concentration : 2 µg/ml



For full product information, images and publications, please visit our [website](https://www.genetex.com).