

Dact3 antibody

Cat. No. GTX85372

| | |
|--------------|-------------------|
| Host | Rabbit |
| Clonality | Polyclonal |
| Isotype | IgG |
| Applications | WB, ELISA |
| Reactivity | Human, Mouse, Rat |

Package
100 µg

Applications

Application Note

*Optimal dilutions/concentrations should be determined by the researcher.

| Suggested dilution | Recommended dilution |
|--------------------|----------------------|
| WB | 1 µg/mL |
| ELISA | Assay dependent |

Not tested in other applications.

Calculated MW 65 kDa. ([Note](#))

Properties

| | |
|---------------|--|
| Form | Liquid |
| Buffer | PBS |
| Preservative | 0.02% Sodium azide |
| Storage | Store as concentrated solution. Centrifuge briefly prior to opening vial. For short-term storage (1-2 weeks), store at 4°C. For long-term storage, aliquot and store at -20°C or below. Avoid multiple freeze-thaw cycles. |
| Concentration | 1 mg/ml (Please refer to the vial label for the specific concentration.) |
| Immunogen | Dact3 antibody was raised against a 17 amino acid synthetic peptide from near the amino terminus of human Dact3. The immunogen is located within amino acids 370 - 420 of Dact3. |
| Purification | Purified by antigen-affinity chromatography |
| Conjugation | Unconjugated |

Note

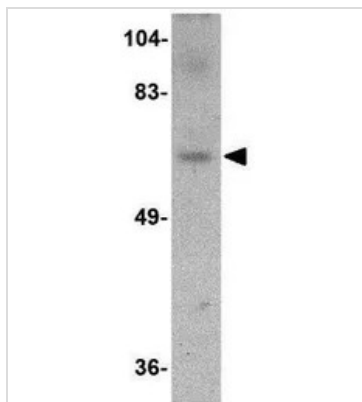
For laboratory research use only. Not for any clinical, therapeutic, or diagnostic use in humans or animals. Not for animal or human consumption.

Purchasers shall not, and agree not to enable third parties to, analyze, copy, reverse engineer or otherwise attempt to determine the structure or sequence of the product.



For full product information, images and publications, please visit our [website](#).

DATA IMAGES



GTx85372 WB Image

WB analysis of rat brain tissue lysate using GTx85372 Dact3 antibody.

Working concentration : 1 µg/ml



For full product information, images and publications, please visit our [website](#).