

## Spred3 antibody

Cat. No. GTX85375

Host	Rabbit
Clonality	Polyclonal
Isotype	IgG
Applications	WB, IHC-P, ELISA
Reactivity	Human, Mouse

References ( 1 )

Package

100 µg

## Applications

## Application Note

\*Optimal dilutions/concentrations should be determined by the researcher.

Suggested dilution	Recommended dilution
WB	2 - 4 µg/mL
IHC-P	2.5 µg/mL
ELISA	Assay dependent

Not tested in other applications.

Calculated MW	43 kDa. ( <a href="#">Note</a> )
Product Note	This Spred3 antibody is predicted to have no cross-reactivity to Spred1 or Spred2.

## Properties

Form	Liquid
Buffer	PBS
Preservative	0.02% Sodium azide
Storage	Store as concentrated solution. Centrifuge briefly prior to opening vial. For short-term storage (1-2 weeks), store at 4°C. For long-term storage, aliquot and store at -20°C or below. Avoid multiple freeze-thaw cycles.
Concentration	1 mg/ml (Please refer to the vial label for the specific concentration.)
Immunogen	Spred3 antibody was raised against a 16 amino acid synthetic peptide near the center of the human Spred3. The immunogen is located within amino acids 140 - 190 of Spred3.
Purification	Purified by antigen-affinity chromatography
Conjugation	Unconjugated



For full product information, images and publications, please visit our [website](#).

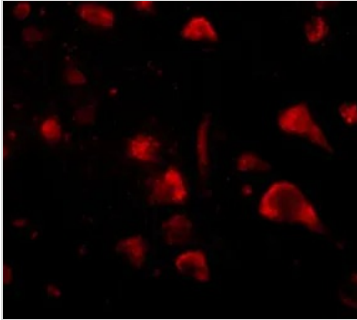
Date 2026 / 01 / 13 Page 1 of 2

For laboratory research use only. Not for any clinical, therapeutic, or diagnostic use in humans or animals. Not for animal or human consumption.

## Note

Purchasers shall not, and agree not to enable third parties to, analyze, copy, reverse engineer or otherwise attempt to determine the structure or sequence of the product.

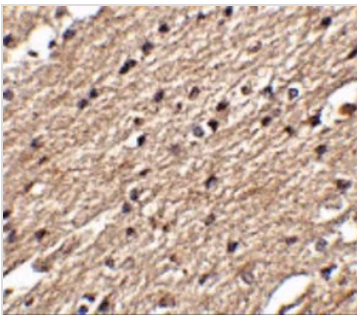
## DATA IMAGES



### GTX85375 IHC-P Image

IHC-P analysis of human brain tissue using GTX85375 Spred3 antibody.

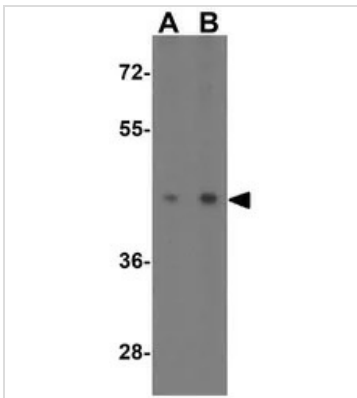
Working concentration : 20 µg/ml



### GTX85375 IHC-P Image

IHC-P analysis of human brain tissue using GTX85375 Spred3 antibody.

Working concentration : 2.5 µg/ml



### GTX85375 WB Image

WB analysis of mouse brain tissue lysate using GTX85375 Spred3 antibody.

Working concentration : (A) 2 and (B) 4 µg/ml



For full product information, images and publications, please visit our [website](#).