

## Nanos3 antibody

Cat. No. GTX85389

|              |                   |
|--------------|-------------------|
| Host         | Rabbit            |
| Clonality    | Polyclonal        |
| Isotype      | IgG               |
| Applications | WB, IHC-P, ELISA  |
| Reactivity   | Human, Mouse, Rat |

Package  
100 µg

## Applications

## Application Note

\*Optimal dilutions/concentrations should be determined by the researcher.

| Suggested dilution | Recommended dilution |
|--------------------|----------------------|
| WB                 | 2 µg/mL              |
| IHC-P              | 2.5 µg/mL            |
| ELISA              | Assay dependent      |

Not tested in other applications.

|               |  |
|---------------|--|
| Calculated MW | 19 kDa. ( <a href="#">Note</a> )   |
| Product Note  | This Nanos3 antibody will not cross-react with either Nanos 1 or Nanos2. |

## Properties

|               |  |
|---------------|--|
| Form          | Liquid   |
| Buffer        | PBS  |
| Preservative  | 0.02% Sodium azide   |
| Storage       | Store as concentrated solution. Centrifuge briefly prior to opening vial. For short-term storage (1-2 weeks), store at 4°C. For long-term storage, aliquot and store at -20°C or below. Avoid multiple freeze-thaw cycles. |
| Concentration | 1 mg/ml (Please refer to the vial label for the specific concentration.)   |
| Immunogen     | Nanos3 antibody was raised against a 16 amino acid synthetic peptide near the carboxy terminus of the human Nanos3. The immunogen is located within the last 50 amino acids of Nanos3.                                     |
| Purification  | Purified by antigen-affinity chromatography  |
| Conjugation   | Unconjugated   |



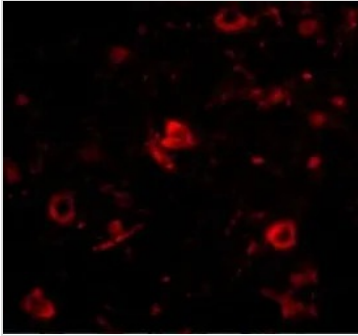
For full product information, images and publications, please visit our [website](#).

For laboratory research use only. Not for any clinical, therapeutic, or diagnostic use in humans or animals. Not for animal or human consumption.

**Note**

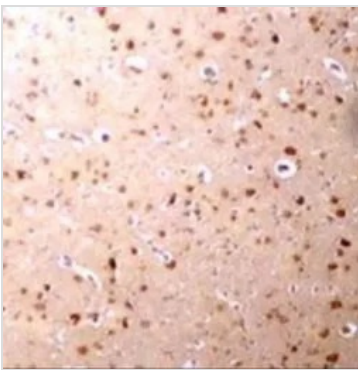
Purchasers shall not, and agree not to enable third parties to, analyze, copy, reverse engineer or otherwise attempt to determine the structure or sequence of the product.

## DATA IMAGES



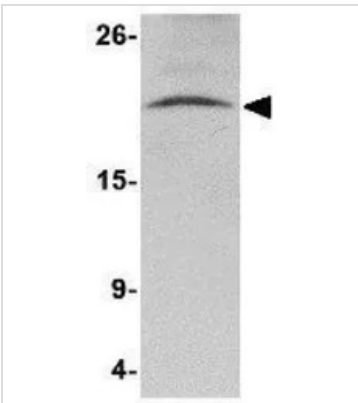
**GTX85389 IHC-P Image**

IHC-P analysis of human brain tissue using GTX85389 Nanos3 antibody.  
Working concentration : 20 µg/ml



**GTX85389 IHC-P Image**

IHC-P analysis of human brain tissue using GTX85389 Nanos3 antibody.  
Working concentration : 2.5 µg/ml



**GTX85389 WB Image**

WB analysis of human brain tissue lysate using GTX85389 Nanos3 antibody.  
Working concentration : 2 µg/ml



For full product information, images and publications, please visit our [website](#).