

FEZ2 antibody

Cat. No. GTX85422

Host	Rabbit
Clonality	Polyclonal
Isotype	IgG
Applications	WB, IHC-P, ELISA
Reactivity	Human, Mouse, Rat

Package
100 µg

Applications

Application Note

*Optimal dilutions/concentrations should be determined by the researcher.

Suggested dilution	Recommended dilution
WB	0.5 - 1 µg/mL
IHC-P	5 µg/mL
ELISA	Assay dependent

Not tested in other applications.

Calculated MW 40 kDa. ([Note](#))

Product Note This antibody is specific for FEZ2 Internal

Properties

Form	Liquid
Buffer	PBS
Preservative	0.02% Sodium azide
Storage	Store as concentrated solution. Centrifuge briefly prior to opening vial. For short-term storage (1-2 weeks), store at 4°C. For long-term storage, aliquot and store at -20°C or below. Avoid multiple freeze-thaw cycles.
Concentration	1 mg/ml (Please refer to the vial label for the specific concentration.)
Immunogen	FEZ2 antibody was raised against a 15 amino acid synthetic peptide from near the center of human FEZ2. The immunogen is located within amino acids 160 - 210 of FEZ2.
Purification	Purified by antigen-affinity chromatography
Conjugation	Unconjugated



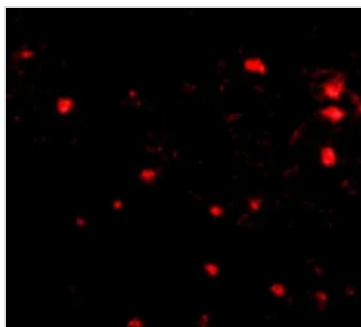
For full product information, images and publications, please visit our [website](#).

For laboratory research use only. Not for any clinical, therapeutic, or diagnostic use in humans or animals. Not for animal or human consumption.

Note

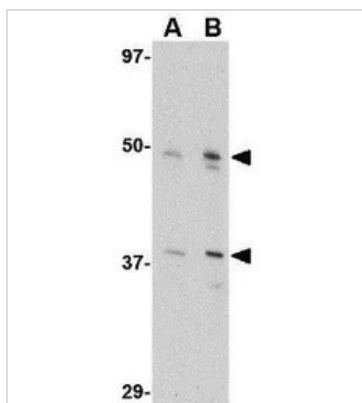
Purchasers shall not, and agree not to enable third parties to, analyze, copy, reverse engineer or otherwise attempt to determine the structure or sequence of the product.

DATA IMAGES

**GTX85422 IHC-P Image**

IHC-P analysis of human brain tissue using GTX85422 FEZ2 antibody.

Working concentration : 5 µg/ml

**GTX85422 WB Image**

WB analysis of 3T3 cell lysate using GTX85422 FEZ2 antibody.

Working concentration : (A) 0.5 and (B) 1 µg/ml



For full product information, images and publications, please visit our [website](#).