

## STEAP3 antibody

Cat. No. GTX85434

|              |                   |
|--------------|-------------------|
| Host         | Rabbit            |
| Clonality    | Polyclonal        |
| Isotype      | IgG               |
| Applications | WB, IHC-P, ELISA  |
| Reactivity   | Human, Mouse, Rat |

Package  
100 µg

## Applications

## Application Note

\*Optimal dilutions/concentrations should be determined by the researcher.

| Suggested dilution | Recommended dilution |
|--------------------|----------------------|
| WB                 | 1 - 2 µg/mL          |
| IHC-P              | 2.5 µg/mL            |
| ELISA              | Assay dependent      |

Not tested in other applications.

|               |  |
|---------------|--|
| Calculated MW | 55 kDa. ( <a href="#">Note</a> )                                     |
| Product Note  | This STEAP3 antibody does not cross-react with other STEAP proteins. |

## Properties

|               |  |
|---------------|--|
| Form          | Liquid   |
| Buffer        | PBS  |
| Preservative  | 0.02% Sodium azide   |
| Storage       | Store as concentrated solution. Centrifuge briefly prior to opening vial. For short-term storage (1-2 weeks), store at 4°C. For long-term storage, aliquot and store at -20°C or below. Avoid multiple freeze-thaw cycles. |
| Concentration | 1 mg/ml (Please refer to the vial label for the specific concentration.)   |
| Immunogen     | STEAP3 antibody was raised against a 15 amino acid synthetic peptide from near the amino terminus of human STEAP3. The immunogen is located within the first 50 amino acids of STEAP3.                                     |
| Purification  | Purified by antigen-affinity chromatography  |
| Conjugation   | Unconjugated   |



For full product information, images and publications, please visit our [website](#).

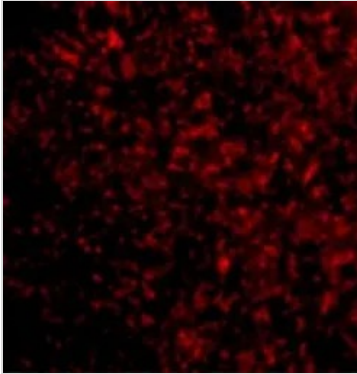
Date 2026 / 01 / 09 Page 1 of 2

For laboratory research use only. Not for any clinical, therapeutic, or diagnostic use in humans or animals. Not for animal or human consumption.

## Note

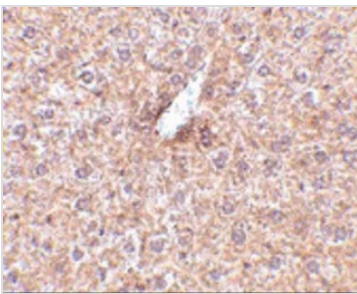
Purchasers shall not, and agree not to enable third parties to, analyze, copy, reverse engineer or otherwise attempt to determine the structure or sequence of the product.

## DATA IMAGES



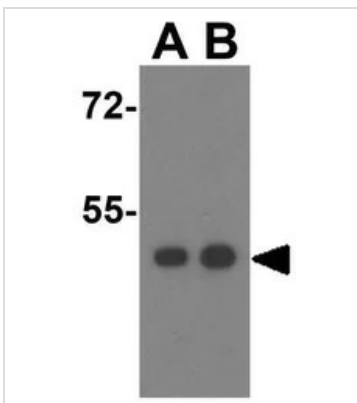
### GTX85434 IHC-P Image

IHC-P analysis of mouse liver tissue using GTX85434 STEAP3 antibody.  
Working concentration : 20 µg/ml



### GTX85434 IHC-P Image

IHC-P analysis of mouse liver tissue using GTX85434 STEAP3 antibody.  
Working concentration : 2.5 µg/ml



### GTX85434 WB Image

WB analysis of HeLa cell lysate using GTX85434 STEAP3 antibody.  
Working concentration : (A) 1 and (B) 2 µg/ml



For full product information, images and publications, please visit our [website](https://www.genetex.com).