

CRLF2 antibody

Cat. No. GTX85439

Host	Rabbit
Clonality	Polyclonal
Isotype	IgG
Applications	WB, IHC-P, ELISA
Reactivity	Mouse

Package
100 µg

Applications

Application Note

*Optimal dilutions/concentrations should be determined by the researcher.

Suggested dilution	Recommended dilution
WB	1 µg/mL
IHC-P	20 µg/mL
ELISA	Assay dependent

Not tested in other applications.

Calculated MW 38 kDa. ([Note](#))

Properties

Form	Liquid
Buffer	PBS
Preservative	0.02% Sodium azide
Storage	Store as concentrated solution. Centrifuge briefly prior to opening vial. For short-term storage (1-2 weeks), store at 4°C. For long-term storage, aliquot and store at -20°C or below. Avoid multiple freeze-thaw cycles.
Concentration	1 mg/ml (Please refer to the vial label for the specific concentration.)
Immunogen	CRLF2 antibody was raised against a 21 amino acid synthetic peptide from near the center of mouse CRLF2. The immunogen is located within amino acids 140 - 190 of CRLF2.
Purification	Purified by antigen-affinity chromatography
Conjugation	Unconjugated

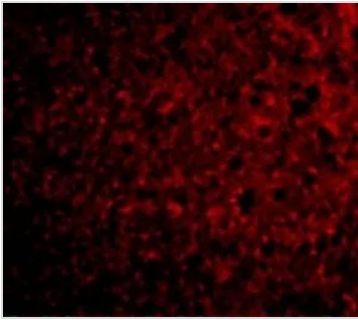
Note For laboratory research use only. Not for any clinical, therapeutic, or diagnostic use in humans or animals. Not for animal or human consumption.

Purchasers shall not, and agree not to enable third parties to, analyze, copy, reverse engineer or otherwise attempt to determine the structure or sequence of the product.

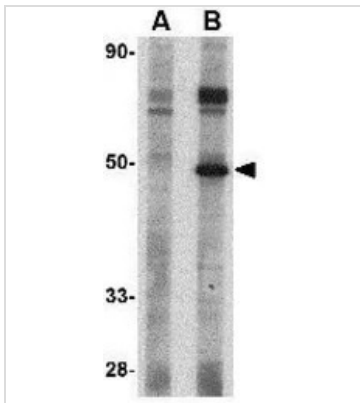


For full product information, images and publications, please visit our [website](#).

DATA IMAGES

**GTX85439 IHC-P Image**

IHC-P analysis of mouse liver tissue using GTX85439 CRLF2 antibody.
Working concentration : 20 µg/ml

**GTX85439 WB Image**

WB analysis of mouse heart tissue lysate in (A) the presence and (B) the absence of blocking peptide using GTX85439 CRLF2 antibody.
Working concentration : 1 µg/ml



For full product information, images and publications, please visit our [website](#).