

ORAI2 antibody

Cat. No. GTX85443

Host	Rabbit
Clonality	Polyclonal
Isotype	IgG
Applications	WB, ICC/IF, ELISA
Reactivity	Human, Mouse

Package
100 µg

Applications

Application Note

*Optimal dilutions/concentrations should be determined by the researcher.

Suggested dilution	Recommended dilution
WB	1 - 4 µg/mL
ICC/IF	5 µg/mL
ELISA	Assay dependent

Not tested in other applications.

Calculated MW 29 kDa. ([Note](#))

Product Note At least two isoforms of ORAI2 are known to exist; this antibody will detect both isoforms. ORAI antibody is predicted not to cross-react with ORAI1 or ORAI3.

Properties

Form	Liquid
Buffer	PBS
Preservative	0.02% Sodium azide
Storage	Store as concentrated solution. Centrifuge briefly prior to opening vial. For short-term storage (1-2 weeks), store at 4°C. For long-term storage, aliquot and store at -20°C or below. Avoid multiple freeze-thaw cycles.
Concentration	1 mg/ml (Please refer to the vial label for the specific concentration.)
Immunogen	ORAI2 antibody was raised against a 15 amino acid synthetic peptide from near the carboxy terminus of human ORAI2. The immunogen is located within the last 50 amino acids of ORAI2.
Purification	Purified by antigen-affinity chromatography
Conjugation	Unconjugated



For full product information, images and publications, please visit our [website](#).

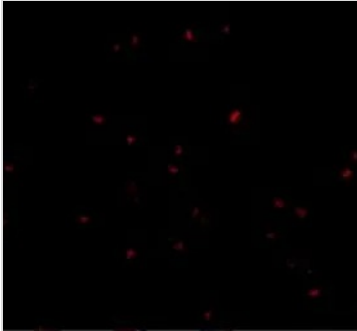
Date 2026 / 01 / 13 Page 1 of 2

For laboratory research use only. Not for any clinical, therapeutic, or diagnostic use in humans or animals. Not for animal or human consumption.

Note

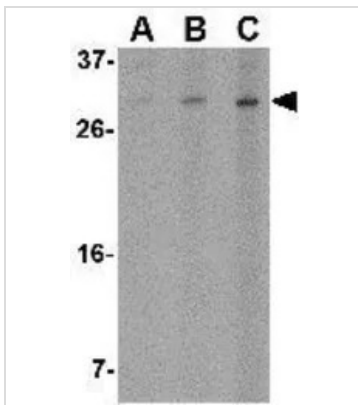
Purchasers shall not, and agree not to enable third parties to, analyze, copy, reverse engineer or otherwise attempt to determine the structure or sequence of the product.

DATA IMAGES



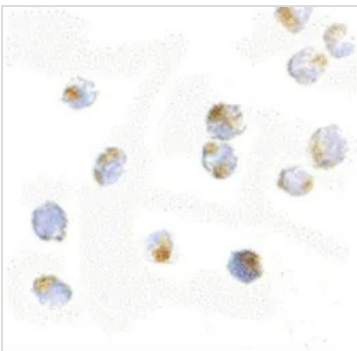
GTX85443 ICC/IF Image

ICC/IF analysis of Jurkat cells using GTX85443 ORAI2 antibody.
Working concentration : 20 µg/ml



GTX85443 WB Image

WB analysis of Jurkat cell lysate using GTX85443 ORAI2 antibody.
Working concentration : (A) 1, (B) 2, and (C) 4 µg/ml



GTX85443 ICC/IF Image

ICC/IF analysis of Jurkat cells using GTX85443 ORAI2 antibody.
Working concentration : 5 µg/ml



For full product information, images and publications, please visit our [website](#).