

# NPAS3 antibody

**Cat. No. GTX85445**

<b>Host</b>	Rabbit
<b>Clonality</b>	Polyclonal
<b>Isotype</b>	IgG
<b>Applications</b>	WB, IHC-P, ELISA
<b>Reactivity</b>	Human, Mouse, Rat

**Package**  
100 µg

## Applications

### Application Note

\*Optimal dilutions/concentrations should be determined by the researcher.

Suggested dilution	Recommended dilution
WB	0.5 - 2 µg/mL
IHC-P	5 µg/mL
ELISA	Assay dependent

Not tested in other applications.

**Calculated MW** 101 kDa. ([Note](#))

**Product Note** This antibody is specific for NPAS3 N-Terminus

## Properties

<b>Form</b>	Liquid
<b>Buffer</b>	PBS
<b>Preservative</b>	0.02% Sodium azide
<b>Storage</b>	Store as concentrated solution. Centrifuge briefly prior to opening vial. For short-term storage (1-2 weeks), store at 4°C. For long-term storage, aliquot and store at -20°C or below. Avoid multiple freeze-thaw cycles.
<b>Concentration</b>	1 mg/ml (Please refer to the vial label for the specific concentration.)
<b>Immunogen</b>	NPAS3 antibody was raised against a 28 amino acid synthetic peptide from near the amino terminus of human NPAS3. The immunogen is located within amino acids 40 - 90 of NPAS3.
<b>Purification</b>	Purified by antigen-affinity chromatography
<b>Conjugation</b>	Unconjugated



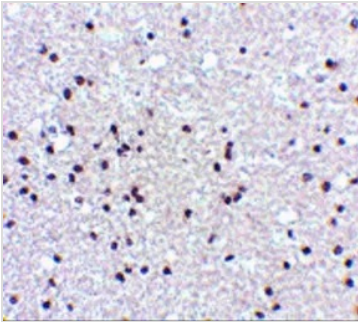
For full product information, images and publications, please visit our [website](#).

For laboratory research use only. Not for any clinical, therapeutic, or diagnostic use in humans or animals. Not for animal or human consumption.

## Note

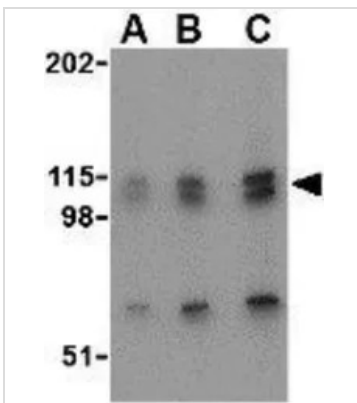
Purchasers shall not, and agree not to enable third parties to, analyze, copy, reverse engineer or otherwise attempt to determine the structure or sequence of the product.

## DATA IMAGES



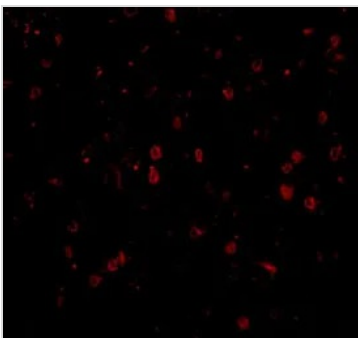
### GTX85445 IHC-P Image

IHC-P analysis of human brain tissue using GTX85445 NPAS3 antibody.  
Working concentration : 5 µg/ml



### GTX85445 WB Image

WB analysis of SK-N-SH cell lysate using GTX85445 NPAS3 antibody.  
Working concentration : (A) 0.5, (B) 1, and (C) 2 µg/ml



### GTX85445 IHC-P Image

IHC-P analysis of human brain tissue using GTX85445 NPAS3 antibody.  
Working concentration : 20 µg/ml



For full product information, images and publications, please visit our [website](https://www.genetex.com).