

PD-L2 antibody

Cat. No. GTX85449

Host	Rabbit
Clonality	Polyclonal
Isotype	IgG
Application	WB, IHC-P, ELISA
Reactivity	Human, Mouse, Rat

Reference (1)
Package
100 µg

APPLICATION

Application Note

*Optimal dilutions/concentrations should be determined by the researcher.

Suggested dilution	Recommended dilution
WB	0.5 - 1 µg/mL
IHC-P	2.5 µg/mL
ELISA	Assay dependent

Not tested in other applications.

Calculated MW 31 kDa. ([Note](#))

PROPERTIES

Form	Liquid
Buffer	PBS
Preservative	0.02% Sodium azide
Storage	Store as concentrated solution. Centrifuge briefly prior to opening vial. For short-term storage (1-2 weeks), store at 4°C. For long-term storage, aliquot and store at -20°C or below. Avoid multiple freeze-thaw cycles.
Concentration	1 mg/ml (Please refer to the vial label for the specific concentration.)
Immunogen	PD-L2 antibody was raised against a 16 amino acid synthetic peptide from near the center of human PD-L2. The immunogen is located within amino acids 140 - 190 of PD-L2.
Purification	Purified by antigen-affinity chromatography
Conjugation	Unconjugated

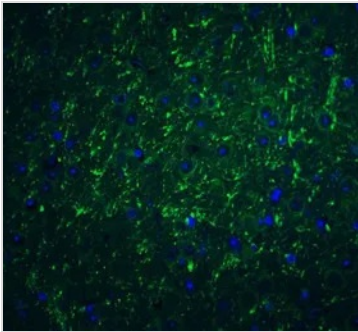
Note

For laboratory research use only. Not for any clinical, therapeutic, or diagnostic use in humans or animals. Not for animal or human consumption.

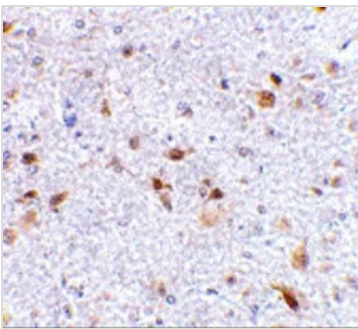
Purchasers shall not, and agree not to enable third parties to, analyze, copy, reverse engineer or otherwise attempt to determine the structure or sequence of the product.



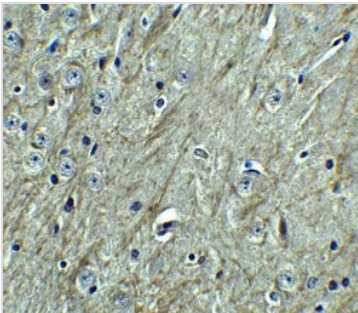
For full product information, images and publications, please visit our [website](#).

DATA IMAGES

GTx85449 IHC-P Image

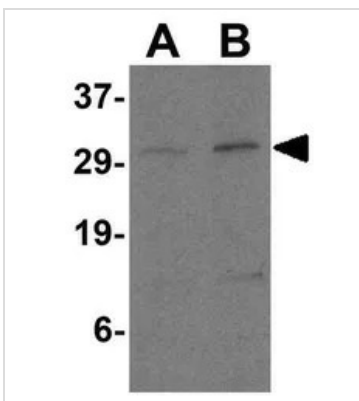
IHC-P analysis of mouse brain tissue using GTx85449 PD-L2 antibody.
Working concentration : 20 µg/ml


GTx85449 IHC-P Image

IHC-P analysis of mouse brain tissue using GTx85449 PD-L2 antibody.
Working concentration : 2.5 µg/ml


GTx85449 IHC-P Image

IHC-P analysis of mouse brain tissue using GTx85449 PD-L2 antibody.
Working concentration : 2.5 µg/ml


GTx85449 WB Image

WB analysis of Raji cell lysate using GTx85449 PD-L2 antibody.
Working concentration : 0.5 and 1 µg/ml



For full product information, images and publications, please visit our [website](https://www.genetex.com).