

Choline Acetyltransferase antibody

Cat. No. GTX85450

Host	Chicken
Clonality	Polyclonal
Isotype	IgY
Applications	ICC/IF, IHC-P, IHC
Reactivity	Human, Mouse, Rat

Package
50 µg

Applications

Application Note

*Optimal dilutions/concentrations should be determined by the researcher.

Suggested dilution	Recommended dilution
ICC/IF	Assay dependent
IHC-P	Assay dependent
IHC	1:1000-1:2000

Not tested in other applications.

Properties

Form	Liquid
Buffer	PBS
Preservative	0.02% Sodium azide
Storage	Store as concentrated solution. Centrifuge briefly prior to opening vial. Store at 4°C. DO NOT FREEZE.
Concentration	100 µg/ml (Please refer to the vial label for the specific concentration.)
Immunogen	Chickens were immunized with a synthetic peptide / keyhole limpet hemocyanin (KLH) conjugate. The peptide corresponded to a region of the Choline Acetyltransferase gene product shared between the human (P28329, NCBI) and mouse (Q03059, NCBI) sequences.
Purification	PBS, sodium azide (0.02%, w/v)
Conjugation	Unconjugated

Note

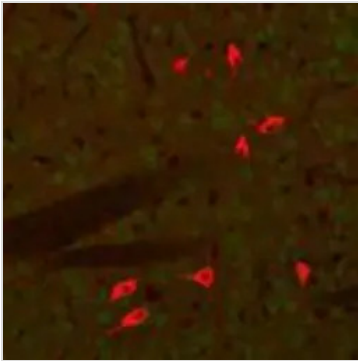
For laboratory research use only. Not for any clinical, therapeutic, or diagnostic use in humans or animals. Not for animal or human consumption.

Purchasers shall not, and agree not to enable third parties to, analyze, copy, reverse engineer or otherwise attempt to determine the structure or sequence of the product.



For full product information, images and publications, please visit our [website](#).

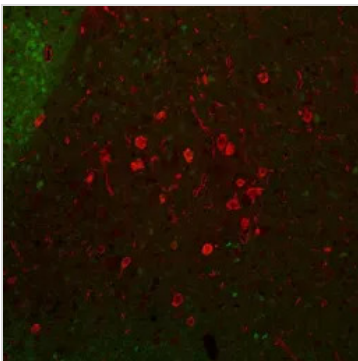
DATA IMAGES



GTX85450 IHC-P Image

IHC-P analysis of 4% PFA-fixed mouse caudate nucleus section using GTX85450 Choline Acetyltransferase antibody. The green staining is low-level GFP immunoreactivity in this transgenic animal.

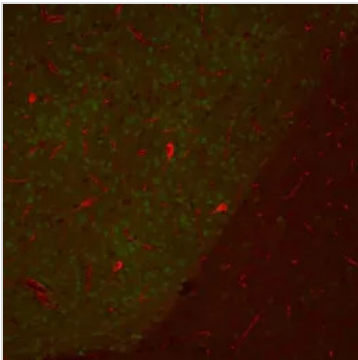
Red : Primary antibody



GTX85450 IHC-P Image

IHC-P analysis of 4% PFA-fixed mouse caudate nucleus section using GTX85450 Choline Acetyltransferase antibody. The green staining is low-level GFP immunoreactivity in this transgenic animal.

Red : Primary antibody



GTX85450 IHC-P Image

IHC-P analysis of 4% PFA-fixed mouse caudate nucleus section using GTX85450 Choline Acetyltransferase antibody. The green staining is low-level GFP immunoreactivity in this transgenic animal.

Red : Primary antibody



For full product information, images and publications, please visit our [website](#).